

OBEDIENCE TRAINING CLUB OF WICHITA FALLS



LICENSED BY THE AMERICAN KENNEL CLUB

AKC AGILITY TRIAL JUDGING PROGRAM

Friday – Sunday

October 19, 20, 21, 2018

EVENT NUMBERS - 2018133710, 2018133711, 2018133712

Wichita Falls MPEC Center

JS Bridwell Agri Center

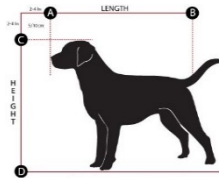
111 N. Burnett Street

Wichita Falls, Texas 76301

Event Committee Emergency Contact: Chris Hodges (Chair) 940-704-0261

Measuring

All agility dogs are required to have an Official Jump Height Card. **Our Judge Mr. Josling is a Volunteer Measuring Official (VMO).** ALL dogs (regardless of height) without a valid Jump Height Card or Yellow "Temporary Measurement" Form (for dogs under 2 years old) must be measured before their first run of the weekend. **Forms will be available at the check-in table. Please fill out a form before requesting to be measured.** If you already have a permanent height card, be sure to have it with you at the trial in case you are asked for it.



Check-In

ARMBANDS NOT REQUIRED

Chapter 1, Section 19 of the Regulations for Agility Trials has been amended to eliminate the mandatory use of identifying stickers/armbands worn by agility exhibitors. The Club is not requiring armband stickers.

Traditional check-in is not necessary. Please check in at the gate on the gate sheet prior to your class.

CONCESSIONS!

Our wonderful concession stand will be open for breakfast and lunch service. Be sure to try the tasty food and drinks.



Outside food and drink is not allowed.

MOVE-UPS



Be sure to let the trial secretary know if you've earned a new title since you entered the trial so your dog can be moved up! Pre-trial move-ups must be submitted to the trial secretary via email **no later than Monday, October 15, 2018 at 6:00 pm.** **Day-to-Day Move-Ups are permitted** if you fill out a move-up form (available at the check-in table) and give it to the trial secretary at any time, but no later than 20 minutes after the last dog crosses the finish line on Friday for a Saturday move-up or on Saturday for a Sunday move-up.

Arrival & Setup

Set-up will be allowed on Thursday from 4 p.m. until 8:00 p.m. and at 7:30 am on Friday and Saturday and 6:30 on Sunday.



Veterinarians (On Call)

Colonial Park Veterinary Clinic

4714 Taft Boulevard

Wichita Falls, TX 76308

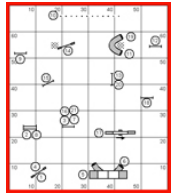
(940) 691-0261

From the show site, get on US 281 South for 1.5 miles. Merge onto FM 369 West.; Exit at Taft Blvd.; 4713 Taft Blvd is on the right.

Dogs may not be left in the building overnight.

Running Order & Course Maps

Each judge will supply course maps. **Please take ONE copy of the map for the courses you are running so we will have sufficient copies for every exhibitor.** Course maps and running orders will be posted in a prominent area. Running orders will also be posted at the gate for your convenience in determining where you are located in the running order.



WANT TO HELP???

Agility trials cannot exist without volunteers! If you'd like to help, please contact:

Dave Hodges at dave.shutterguy@yahoo.com

Or, if you prefer, please use this Google Doc to fill yourself in on the volunteer schedule:

<https://tinyurl.com/OTCWF-Workers>

Use the tabs at the bottom for each day.

Any and all assistance makes for a smoother running trial, so please check with Dave often to see how you can help!

Workers receive a \$4 voucher good to use for lunch at the concession stand, toward your next entry or at the Worker's Raffle!

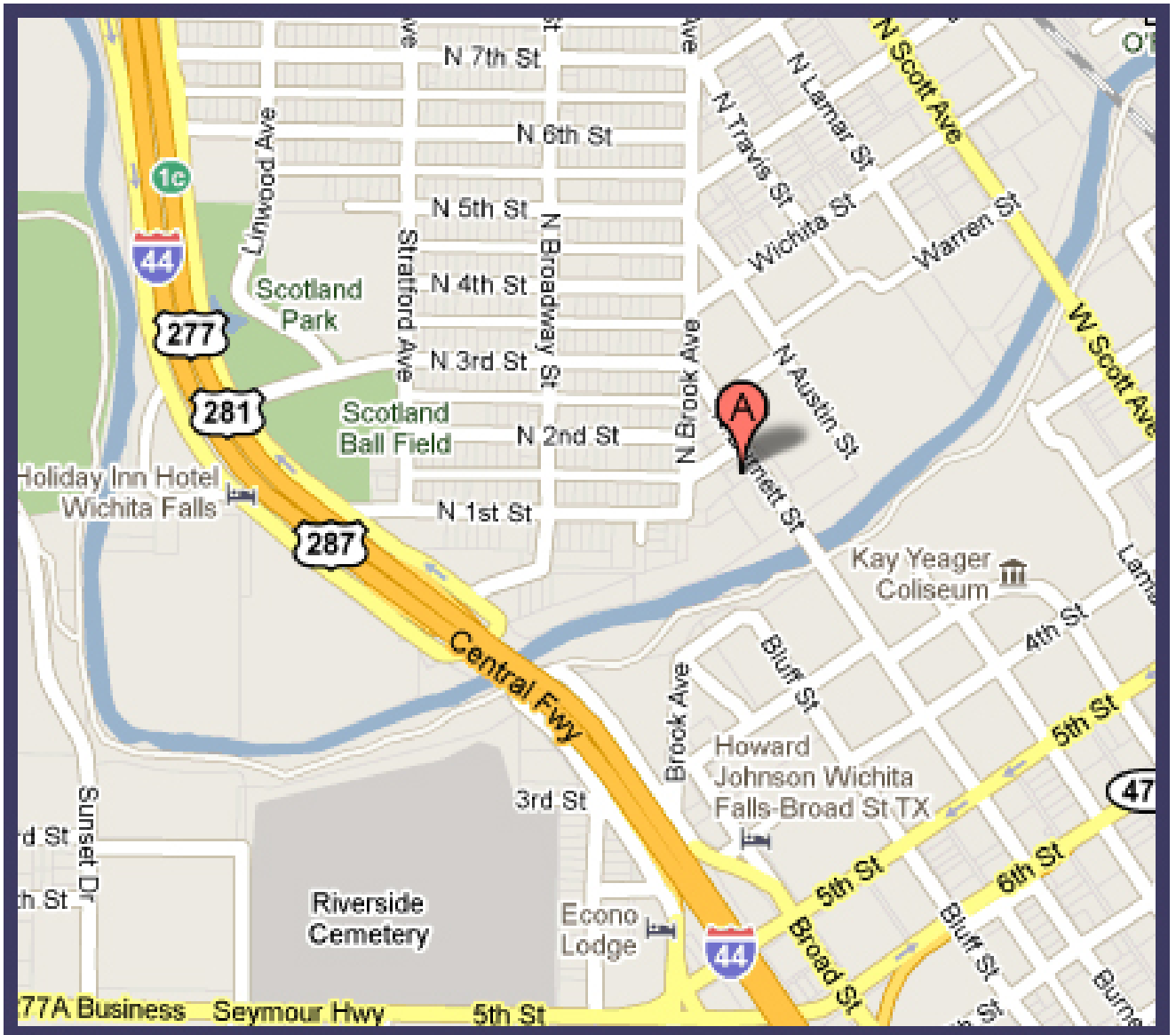
Even if you don't sign up, your services at the trial could be needed. Please ask!

THANK YOU!

The Trial Site

From the south on Hwys. 287, 281 or I-44: Take the Broad Street/Business District exit to 6th Street and turn right on 6th Street. Go left on Burnett Street and proceed two blocks to the JS Bridwell Agri Center.

From the north on Hwys. 287, 281 or I-44: Take Exit 1/Hwy.277. Turn left on 6th Street and then left on Burnett Street. Proceed two blocks to the JS Bridwell Agri Center.



PLEASE BE RESPECTFUL OF THE FACILITY...

Dog pottying should be done outside. Please don't let your dogs potty inside the building.

THANK YOU FOR YOUR COOPERATION. WE TRULY APPRECIATE EVERYONE'S HELP.



Obedience Training Club Of Wichita Falls
JUDGING PROGRAM
Class counts are contingent upon move-up requests
that may not have been received yet.
RINGS WILL RUN CONCURRENTLY

PLEASE NOTIFY THE GATE STEWARDS OF ANY RUNNING CONFLICTS.
 CONFLICTS WILL BE HANDLED ON A CASE-BY-CASE BASIS.

ALL TIMES (except for the starting times each day) ARE ESTIMATES.

Times are listed as a courtesy only to give competitors an IDEA of when the class WALK-THROUGHS could begin. Exhibitors are responsible for being at the ring when their turn is called. Neither the Club nor the Judges will be responsible for the start times. Please plan your arrival accordingly. Judges may split walk-thrus at their discretion. Lunch can be taken at judges' discretion.

Running Order, Friday, October 19, 2018 (389 Total Runs)

Ring 1 – T2B & Standard; Mr. Craig Josling		Ring 2 – FAST & JWW; Mr. Michael Teh	
APPROX TIME	Briefing and Walk Thru Start at 8:40 am Runs start at 9:00 AM	APPROX TIME	Briefing and Walk Thru Start at 8:40 am FAST Course is open for walking during T2B Runs start at 9:30 AM
9:00 AM	T2B Walk/Run 48 dogs: 24C(1), 24"(8), 20"(15), 16"(11), 12"(10), 8"(4) Course Change	9:30 AM	Exc/Mas/Open/Nov FAST-Run 39 dogs: 24"(3), 24C(1), 20"(10), 16"(13), 12"(7), 8"(5) ALL LEVELS OF FAST WILL RUN TOGETHER... OPEN & NOVICE WILL RUN CONCURRENTLY WITH EX/MAS IN JUMP-HEIGHT ORDER. Course Change
10:00 AM	Exc/Mas Standard-Walk/Run 38 dogs: 24C(2), 24"(7), 20"(29)		
11:00 AM	Exc/Mas Standard- Walk/Run 25 dogs: 16"	10:25 AM	Exc/Mas JWW-Walk/Run 38 dogs: 12"(23), 8"(13), 4"(2)
11:45 AM	Exc/Mas Standard- Walk/Run 37 dogs: 12"(23), 8"(12), 4"(2) Course Change	11:15 AM	Exc/Mas JWW-Walk/Run 38 dogs: 24C(2), 24"(7), 20"(29)
1:00 PM	Premier STD – Walk/Run 29 dogs: 24C(1), 24"(6), 20"(13), 16"(5), 12"(3), 8"(1) Course Change	12:10 PM	Exc/Mas JWW - Walk/Run 24 dogs: 16" Course Change
2:00 PM	Open Standard - Walk/Run 7 dogs: 24"(2), 20"(3), 16"(0), 12"(0), 8"(2); Course Change	1:10 PM	Open JWW – Walk/Run 13 dogs: 24"(2), 20"(4), 16"(2), 12"(1), 8"(4) Course Change
2:40 PM	Novice Standard - Walk/Run 16 dogs: 24"(2), 20"(3), 16"(4), 12"(2), 8"(5)	1:55 PM	Novice JWW - Walk/Run 14 dogs: 24"(2), 20"(2), 16"(4), 12"(2), 8"(4) Course Change
		2:40 pm	Premier JWW – Walk/Run 22 dogs: 24C(1), 24"(4), 20"(11), 16"(3), 12"(3)

Running Order, Saturday, October 20, 2018 (468 Total Runs)

Ring 1 – T2B & Standard; Mr. Michael Teh		Ring 2 – FAST & JWW; Mr. Craig Josling	
APPROX TIME	Briefing and Walk Thru Start at 8:40 am Runs start at 9:00 AM	APPROX TIME	Briefing and Walk Thru Start at 8:40 am FAST Course is open for walking during T2B Runs start at 9:30 AM
9:00 AM	T2B Walk/Run 48 dogs: 24C(1), 24"(10), 20"(16), 16"(8), 12"(10), 8"(4) Course Change	9:30 AM	Exc/Mas/Open/Nov FAST-Run 51 dogs: 24"(4), 24C(1), 20"(15), 16"(15), 12"(11), 8"(5) ALL LEVELS OF FAST WILL RUN TOGETHER... OPEN & NOVICE WILL RUN CONCURRENTLY WITH EX/MAS IN JUMP-HEIGHT ORDER. Course Change
10:00 AM	Exc/Mas Standard-Walk/Run 48 dogs: 24C(2), 24"(9), 20"(37)		
11:15 AM	Exc/Mas Standard- Walk/Run 32 dogs: 16"	10:35 AM	Exc/Mas JWW-Walk/Run 41 dogs: 12"(25), 8"(14), 4"(2)
12:10 AM	Exc/Mas Standard- Walk/Run 40 dogs: 12"(25), 8"(13), 4"(2) Course Change	11:30 AM	Exc/Mas JWW-Walk/Run 48 dogs: 24C(2), 24"(8), 20"(38)
1:30 PM	Premier STD – Walk/Run 37 dogs: 24C(1), 24"(7), 20"(17), 16"(8), 12"(3), 8"(1) Course Change	12:35 PM	Exc/Mas JWW - Walk/Run 30 dogs: 16" Course Change
2:35 PM	Open Standard - Walk/Run 15 dogs: 24"(4), 20"(7), 16"(2), 12"(0), 8"(2); Course Change	1:35 PM	Open JWW – Walk/Run 16 dogs: 24"(3), 20"(5), 16"(5), 12"(1), 8"(2) Course Change
3:25 PM	Novice Standard - Walk/Run 15 dogs: 24"(3), 20"(3), 16"(3), 12"(2), 8"(4)	2:20 PM	Novice JWW - Walk/Run 18 dogs: 24"(5), 20"(4), 16"(3), 12"(2), 8"(4) Course Change
		3:10 PM	Premier JWW – Walk/Run 28 dogs: 24C(1), 24"(5), 20"(12), 16"(7), 12"(3)

Visit <http://www.ntxagility.com> for complete results after the trial

Running Order, Sunday, October 21, 2018 (407 Total Runs)

Ring 1 – T2B & Standard; Mr. Craig Josling

Ring 2 – T2B & JWW; Mr. Michael Teh

**PLEASE NOTE THE CHANGE IN RUNNING ORDER IN RING 2
IN EX/MAS JWW FROM THE PREVIOUS TWO DAYS**

APPROX TIME	Briefing and Walk Thru Start at 7:40 am Runs starts at 8:00 AM	APPROX TIME	Briefing and Walk Thru Start at 7:40 am Runs starts at 8:00 AM
8:00 AM	T2B Run 32 dogs: 24C(1), 24"(8), 20"(23) Course Change	8:00 AM	T2B-Run 28 dogs: 16"(11), 12"(12), 8"(5) Course Change
8:45 AM	Exc/Mas Standard-Walk/Run 44 dogs: 24C(1), 24"(8), 20"(35)	8:40 AM	Exc/Mas JWW-Walk/Run 29 dogs: 16"
9:55 AM	Exc/Mas Standard- Walk/Run 30 dogs: 16"	9:25 AM	Exc/Mas JWW-Walk/Run 37 dogs: 12"(23), 8"(12), 4"(2)
10:50 AM	Exc/Mas Standard- Walk/Run 36 dogs: 12"(23), 8"(11), 4"(2) Course Change	10:15 AM	Exc/Mas JWW - Walk/Run 44 dogs: 24C(1), 24"(7), 20"(36) Course Change
12:05 PM	Premier STD – Walk/Run 32 dogs: 24C(1), 24"(5), 20"(15), 16"(6), 12"(4), 8"(1) Course Change	11:30 AM	Open JWW – Walk/Run 19 dogs: 24"(4), 20"(7), 16"(4), 12"(2), 8"(2) Course Change
1:10 PM	Open Standard - Walk/Run 18 dogs: 24"(5), 20"(9), 16"(2), 12"(0), 8"(2); Course Change	12:20 PM	Novice JWW - Walk/Run 18 dogs: 24"(5), 20"(5), 16"(3), 12"(2), 8"(3) Course Change
2:05 PM	Novice Standard - Walk/Run 15 dogs: 24"(3), 20"(4), 16"(3), 12"(2), 8"(3)	1:10 PM	Premier JWW – Walk/Run 25 dogs: 24C(1), 24"(3), 20"(14), 16"(4), 12"(3)

Visit <http://www.ntxagility.com> for complete results after the trial

IMPORTANT INFO...

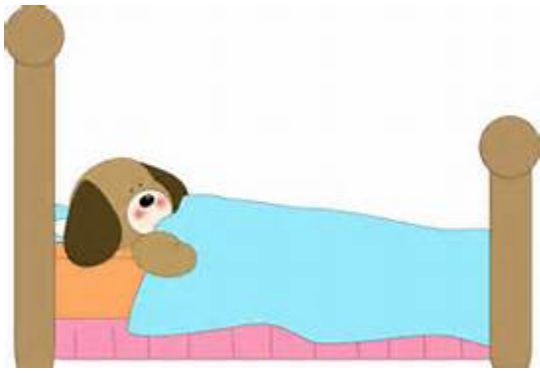
Please....



Scoop The Poop!

Exhibitors are responsible for cleaning up after their dogs immediately on hotel/motel and show grounds. Motels/hotels require that dogs be crated when unattended; no bathing or grooming of dogs in guest rooms. Exhibitors/handlers are responsible for any damages to motels/hotels or the event site and may result in disciplinary action by the Trial Committee. Entries may be refused in the future for previous misuse of the motel facilities. This is an AKC-supported measure.

PLEASE REMEMBER: Hotels do not have to allow us to keep our dogs in the rooms. We are all responsible for insuring future pet acceptance at our favorite hotels. Please clean up after your dogs (inside and outside), keep them quiet so as not to disturb other guests, and generally be considerate of others. We all want to continue to have nice places to stay when we travel with our dogs.



MOTEL/RV PARK INFORMATION

NOTE: The club cannot guarantee that the hotels/motels listed below accept dogs. Please check regarding rates and dog acceptance policy when making reservations. Rates may change without notice.

Please inform management of your dogs when you book reservations and when you register. Motel dog regulations and fees may change without notice. The club cannot be responsible for any changes.

NOTE: The club cannot guarantee the rates listed below or that the hotels/motels accept dogs. **Please check regarding dog acceptance policy AND inquire about a pet fee when making reservations.** Please inform management of your dogs when you book reservations and when you register. The club cannot be responsible for any changes.

COMFORT INN
1317 KENLEY AVENUE
WICHITA FALLS, TX 76306
940-766-3300

\$15 PER NIGHT PET FEE

ASK WHEN MAKING RESERVATIONS.

MOTEL 6 (Remodeled)

No Pet Fee

1212 Broad Street
Wichita Falls, TX 76301
940-723-8008

MOTEL 6 (Remodeled)

No Pet Fee

Fridge and Microwave in all rooms

1211 Central Freeway
Wichita Falls, TX 76306
940-723-5541

Large Grassy Area for Dogs

LAQUINTA INN

No Pet Fee

1128 Central Freeway North
Wichita Falls, TX 76306
940-322-6971

EXECUTIVE INN & SUITES

Newly Remodeled.

**No Pet Fee; May Assess
a "Cleaning" Fee**

1750 Maurine St.
Wichita Falls, TX 76306
(940) 322-2477

RED ROOF INN

No Pet Fee

Fridge & Microwave

1032 Central Freeway
Wichita Falls, TX 76306
(940) 766-6881

RV parking on site: RV spots are available at the MPEC complex with water and electricity with a dump station about ½ mile away at a city-owned RV park by the river. The sites are \$20 per night (first come, first served). MPEC personnel will turn on the electricity and collect the fees. Fee is subject to change.

RV Questions?

Contact Frank at [940-733-4277](tel:940-733-4277) ([Leave Message](#))

RVers will need to go to the Box Office at the Kay Yeager to pay and have the electricity turned on.

LATE ARRIVERS: The electricity will not be turned on after hours. You will need pay at the Box Office at the Kay Yeager Coliseum the next day for the electricity to be turned on.

