

JUDGING PROGRAM

Red Dirt Agility Club of Oklahoma



SoccerCity OKC
4520 Old Farm Rd
Oklahoma City, OK 73162

AKC All-Breed Agility Trial
Open to All AKC-Recognized Breeds and All-American Dogs / Mixed Breed
Dogs Listed in the AKC Canine Partners Program

Friday – Monday (Memorial Day Weekend)
May 26, 27, 28, 29, 2017

EVENT NUMBERS
2017688404, 2017688405, 2017688406, 2017688407
INDOORS - AIR CONDITIONED ARENA WITH SOCCER TURF SURFACE

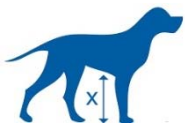
EVENT COMMITTEE EMERGENCY CONTACTS – Ragan Kimbro 405-535-5483 (Cell)

ARMBAND STICKERS NOT REQUIRED

Chapter 1, Section 19 of the Regulations for Agility Trials has been amended to eliminate the mandatory use of identifying stickers/armbands worn by agility exhibitors. RDAC is not requiring armband stickers.

Traditional check-in is not necessary. Please check in at the gate on the gate sheet prior to your class. If your dog needs to be measured, it is YOUR responsibility to have a measurement done prior to running and failure to do so will result in the cancellation of any qualifying scores.

MEASUREMENTS



Exhibitors are required to have a valid Official Jump Height Card/ Valid yellow form for each of their dogs and

must be able to present it at any time if requested during the trial

There will be not be a Measuring Official at this trial. Measurements will not be official -- it will only get you through the weekend. All exhibitors who checked on the entry form that their dog needs to be measured must be measured before running (unless you're jumping 24"). If you are entered in Novice or Open, you do not have to get there early to check-in. It will be open all day. We will do measurements before either Novice or Open.

CONCESSIONS

Concessions will be available. Both fast food and restaurants are located within easy driving distance.

No other food or drink is allowed at the show site. Your cooperation is greatly appreciated. Use of Coolers: The use of small coolers is permitted for dog treats and dog food ONLY.

MOVE-UPS



Be sure to let the trial secretary know if you've earned a new title since you entered the trial so your dog can be moved up! Pre-trial move-ups must be submitted to the trial secretary via email **no later than Monday, May 22, 2017 at 6:00 pm.** Day-to-Day Move-Ups are permitted if you fill out a move-up form (available at the check-in table) and give it to the trial secretary at any time, but no later than 20 minutes after the last dog crosses the finish line on Fri for a Sat move-up, Sat. for a Sun. move-up or on Sun. for a Mon. move-up.

Arrival & Setup

Exhibitors are allowed to set up beginning at 2:00 PM Friday, 7:30 am on Sat & Sun; and at 6:30 am Monday.

To ensure there is adequate crating for everyone, mats are not allowed.

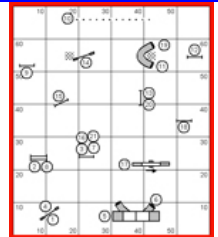
SET UP WILL NOT BE ALLOWED PRIOR TO 2:00 PM ON FRIDAY.

CRATING SPACE WILL BE TIGHT. PLEASE BE COURTEOUS OF OTHER EXHIBITORS AND CONSERVE SPACE AS MUCH AS POSSIBLE. PLEASE NO MATS OR LARGE LOUNGE CHAIRS.

DOGS MAY NOT BE LEFT IN THE BUILDING OVERNIGHT.

Running Order & Course Maps

The judges will supply course maps. Please take **ONE** copy of the map for the courses you are running so we will have sufficient copies for every exhibitor. Course maps and running orders will be posted in a prominent area. Running orders will also be posted at the gate for your convenience in determining where you are located in the running order.



WANT TO HELP???

We appreciate everyone who helps! Any and all assistance makes for a smoother running trial, so please check often during the trial to see how you can help!

Volunteer duties will not interfere with running your dog.

Volunteers will receive snacks and coupons good for either lunch or raffle tickets.

Even if you don't sign up on the volunteer form, your services could be needed. Please ask during the trial! **THANK YOU!**

MAKE IT EASY! Go to this Google Doc and fill in your name where you can help.

<http://tinyurl.com/jeapjrh>

RED DIRT AGILITY CLUB...

FIND US ON FACEBOOK

<http://tinyurl.com/qgdwc5q>



THE TRIAL SITE

IMPORTANT.... We are so excited to be able to host another agility trial at SoccerCity OKC indoor soccer arena. It is a fabulous facility and the management is happy to have us back because we are all courteous with parking and picking up after our dogs. Please help us keep this venue for agility trials by following a few simple rules!

- * Crating might be tight, so please don't spread out. Mats and large lounge-type chairs cannot be used. The trial committee might ask you to condense your space if necessary. Please be courteous regarding this.... Everyone needs crating space.
- * No dogs on balcony.
- * No food or open containers on the turf.
- * Keep treats in a container on the turf.
- * No grooming inside the building.
- * **No parking on the street in the subdivision (they'll have you towed!!)**
- * Be respectful of the neighborhood surrounding the venue.
- * Keep your dogs on leash and as always ensure that you clean up after them.
- * There are walking trails nearby so please minimize exercising dogs in the subdivision.
- * **PLEASE KEEP ALL OUTSIDE DOORS CLOSED.** If you come in or go out, please be sure to close the door behind you! This has been a problem in the past and we need to be sure to keep it from happening. We need the cold air to stay inside, please!

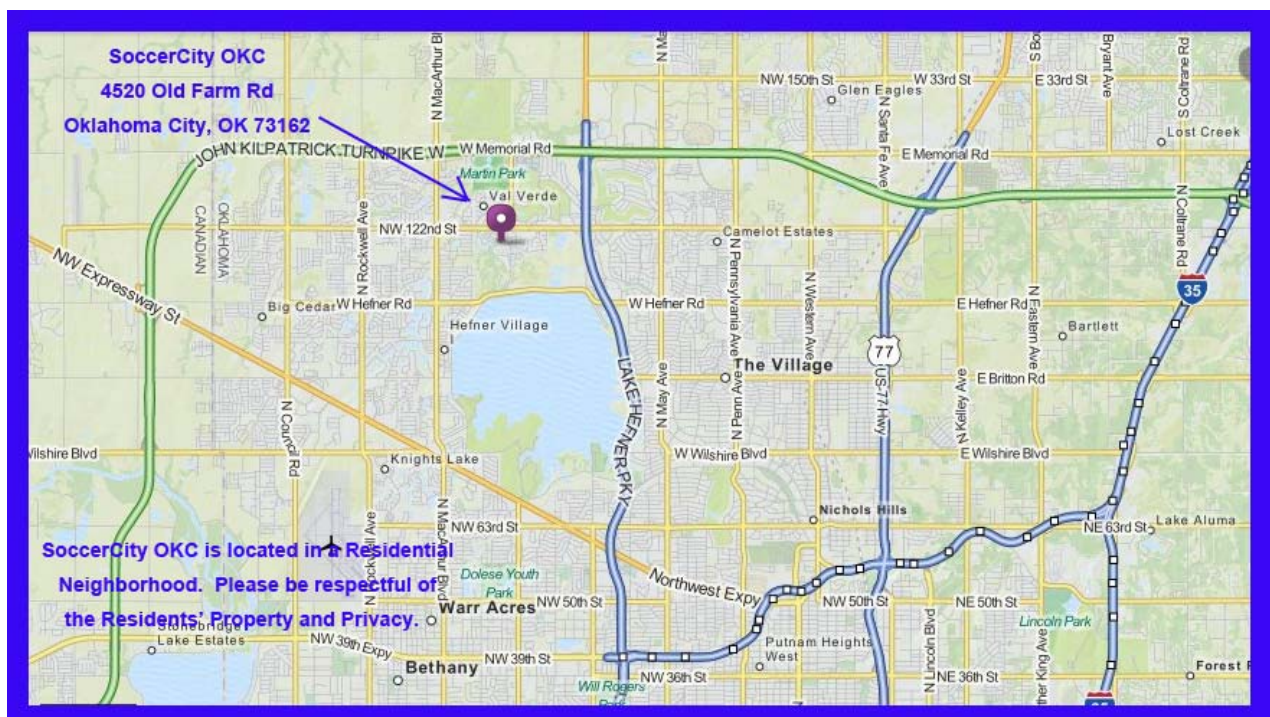
THIS TRIAL SITE IS IN A RESIDENTIAL AREA...

PLEASE RESPECT THE RESIDENTS' PROPERTY AND PRIVACY.

PLEASE DO NOT PARK ON THE STREET – YOU WILL BE TOWED.

This venue is in the middle of the Summerfield subdivision. Your GPS should be able to find the address correctly.

From OK-74 (Lake Hefner Parkway), take the Hefner Road exit and turn West towards the lake. Go about 2 miles, and turn right at Meridian Ave (at the stoplight). Go about .5 miles to Old Farm Rd. Turn left onto Old Farm Rd. Soccer City will be immediately on your left at 4520 Old Farm Road.



Veterinarians (On Call)



Neel Veterinary Hospital

2700 N MacArthur Blvd.

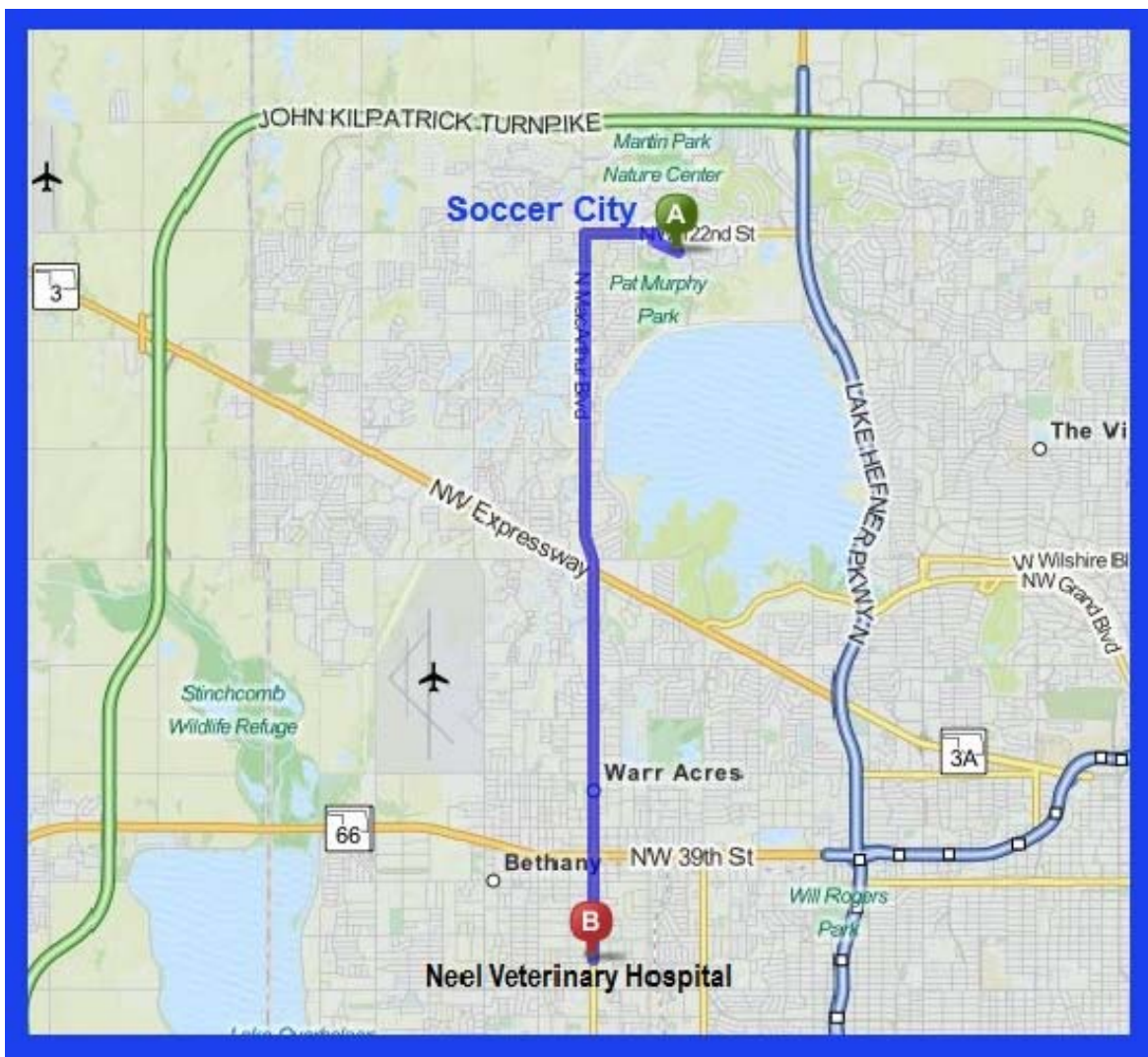
Oklahoma City, OK 73127

405-947-8387

Veterinarian office is open 24 hours/day, 7 days/week

TO VETERINARIAN FROM SHOW SITE - Approximate Travel Time: 16 Minutes

Start out going northeast on Old Farm Rd toward N Meridian Ave. (.05 mi). Take the 1st left onto N Meridian Ave. (.2 mi); (if you reach Dahoon Dr you've gone a little too far). Take the 1st right onto NW 122nd St (1.1 mil) (If you are on Kingsbrook Rd and reach Innsbrook Ln you've gone a little too far). Merge onto Lake Hefner Pky / OK-74 S. (5.8 mi). Merge onto NW 39th St / OK-66 W toward Warr Acres / Bethany. (2.5 mi). Turn left onto N MacArthur Blvd. (1 mi) (Grandy's is on the corner). 2700 N MACARTHUR BLVD is on the left.





Red Dirt Agility Club of Oklahoma

JUDGING SCHEDULE

Please notify the Gate Stewards of any running conflicts.

Conflicts will be handled on a case-by-case basis when/if they occur.

Class counts are contingent on move-ups not yet received and wait-list changes that have not yet been made.

Rings will run concurrently.

ALL TIMES (except for the starting times each day) ARE ESTIMATES.

TIMES ARE LISTED AS A COURTESY ONLY TO GIVE COMPETITORS AN IDEA OF WHEN THE CLASS WALK-THRUS COULD BEGIN.

Exhibitors are responsible for being at the ring when their turn is called.

Neither the Club nor the Judges will be responsible for the start times. Please plan your arrival accordingly.

Running Order, Friday, May 26, 2017 (229 Total Runs)

Ring 1 – Jamie Horacek, Judge		Ring 2 – Sherry Jefferson, Judge	
APPROX. TIME	Briefing and Walk-Thru at 3:40 p.m.; Judging starts at 4:00 p.m.	APPROX. TIME	Briefing and Walk-Thru at 3:40 p.m.; Judging starts at 4:00 p.m.
4:00 PM	EX/MAS STD; Run 42 dogs: 20"	4:00 PM	EX/MAS JWW; Run 35 dogs: 12"(16), 8"(18) 4"(1)
5:10 PM	EX/MAS STD; Walk/Run 35 dogs: 12"(16), 8"(18) 4"(1)	4:40 PM	EX/MAS JWW; Walk/Run 37 dogs: 24"(15), 16"(22)
6:10 PM	EX/MAS STD; Walk/Run 38 dogs: 24"(15), 16"(23)	5:45 PM	EX/MAS JWW; Walk/Run 42 dogs: 20"

PREMIER STD WAS SPLIT INTO 2 GROUPS TO HELP ALLEVIATE CONFLICTS WITH T2B.

REMAINING CONFLICTS, IF ANY, SHOULD BE WORKED OUT ON A CASE-BY-CASE BASIS.

Running Order, Saturday, May 27, 2017 (500 Total Runs)

Ring 1 – Sherry Jefferson, Judge		Ring 2 – Jamie Horacek, Judge	
APPROX. TIME	Premier STD Briefing and Walk-Thru at 8:35 a.m.; <u>JUDGING STARTS</u> when 20" T2B is finished in Ring 2 @ approx. 9:30 am; No additional walk-thru for Premier 24"-20"; walk while T2B is running.	APPROX. TIME	T2B Briefing and Walk-Thru at 8:35 a.m.; 24"-20" Walk for 8 minutes; followed by 16"-8" Walk for 8 minutes. Judging starts at 9:00 am
9:30 AM	Premier STD; Run 22 dogs: 24"(6), 20"(16)	9:00 AM	T2B; Run 74 dogs: 24"(4), 20"(25) 16"(21), 12"(15), 8"(9) Course Change
9:55 AM	Premier STD; Walk/Run 18 dogs: 16"(9), 12"(3), 8"(6) Course Change	10:30 AM	EX/MAS JWW; Walk/Run 43 dogs: 12"(21), 8"(20), 4"(2)
10:45 AM	EX/MAS STD; Walk/Run 43 dogs: 20"	11:25 AM	EX/MAS JWW; Walk/Run 41 dogs: 24"(14), 16"(27)
11:55 AM	EX/MAS STD; Walk/Run 41 dogs: 12"(20), 8"(19), 4"(2)	12:20 PM	EX/MAS JWW; Walk/Run 47 dogs: 20" Course Change
1:00 PM	EX/MAS STD; Walk/Run 42 dogs: 24"(15), 16"(27) Course Change	1:40 PM	Premier JWW; Walk/Run 39 dogs: 24"(5), 20"(15) 16"(9), 12"(3), 8"(7) Course Change
2:20 PM	OPEN STD; Walk/Run 19 dogs: 24"(1), 20"(8) 16"(6), 12"(1), 8"(2), 4"(1) – Course Change	2:50 PM	OPEN JWW; Walk/Run 17 dogs: 24"(2), 20"(4) 16"(5), 12"(2), 8"(2), 4"(2) Course Change
3:15 PM	NOVICE STD; Walk/Run 27 dogs: 24"(3), 20"(9), 16"(7), 12"(6), 8"(2)	3:40 PM	NOVICE JWW; Walk/Run 27 dogs: 24"(3), 20"(11) 16"(7), 12"(4), 8"(2)

A LUNCH BREAK CAN BE TAKEN AT JUDGES' DISCRETION; WALK THRUS CAN BE SPLIT AT JUDGE'S DISCRETION

GO TO WWW.NTXAGILITY.COM FOR COMPLETE RESULTS AFTER THE TRIAL

PREMIER STD WAS SPLIT INTO 2 GROUPS TO HELP ALLEVIATE CONFLICTS WITH T2B.
 REMAINING CONFLICTS, IF ANY, SHOULD BE WORKED OUT ON A CASE-BY-CASE BASIS.

Running Order, Sunday, May 28, 2017 (500 Total Runs)			
Ring 1 - Jamie Horacek, Judge		Ring 2 - Sherry Jefferson, Judge	
APPROX. TIME	Premier STD Briefing and Walk-Thru at 8:35 a.m.; <u>JUDGING STARTS</u> when 20" T2B is finished in Ring 2 @ approx. 9:30 am; No additional walk-thru for Premier 24"-20"; walk while T2B is running.	APPROX. TIME	T2B Briefing and Walk-Thru at 8:35 a.m.; 24"-20" Walk for 8 minutes; followed by 16"-8" Walk for 8 minutes. Judging starts at 9:00 am
9:30 AM	Premier STD; Run 21 dogs: 24"(6), 20"(15)	9:00 AM	T2B; Run 72 dogs: 24"(5), 20"(27) 16"(21), 12"(12), 8"(7) Course Change
9:55 AM	Premier STD; Walk/Run 16 dogs: 16"(8), 12"(2), 8"(6) Course Change	10:25 AM	EX/MAS JWW; Walk/Run 42 dogs: 12"(21), 8"(20), 4"(1)
10:45 AM	EX/MAS STD; Walk/Run 43 dogs: 20"	11:20 AM	EX/MAS JWW; Walk/Run 44 dogs: 24"(15), 16"(29)
11:50 AM	EX/MAS STD; Walk/Run 40 dogs: 12"(20), 8"(19), 4"(1)	12:20 PM	EX/MAS JWW; Walk/Run 47 dogs: 20" Course Change
12:55 PM	EX/MAS STD; Walk/Run 44 dogs: 24"(16), 16"(28) Course Change	1:40 PM	Premier JWW; Walk/Run 42 dogs: 24"(4), 20"(16) 16"(10), 12"(5), 8"(7) Course Change
2:20 PM	OPEN STD; Walk/Run 18 dogs: 24"(1), 20"(8) 16"(5), 12"(1), 8"(2), 4"(1) – Course Change	2:50 PM	OPEN JWW; Walk/Run 16 dogs: 24"(2), 20"(3) 16"(5), 12"(2), 8"(2), 4"(2) Course Change
3:15 PM	NOVICE STD; Walk/Run 26 dogs: 24"(3), 20"(8), 16"(6), 12"(7), 8"(2)	3:40 PM	NOVICE JWW; Walk/Run 29 dogs: 24"(3), 20"(12) 16"(7), 12"(5), 8"(2)

Running Order, Monday, May 29, 2017 (298 Total Runs)			
Ring 1 - Sherry Jefferson, Judge		Ring 2 - Jamie Horacek, Judge	
APPROX. TIME	Briefing and Walk-Thru at 7:40 a.m.; Judging starts at 8:00 a.m.	APPROX. TIME	Briefing and Walk-Thru at 7:40 a.m.; Judging starts at 8:00 a.m.
8:00 AM	EX/MAS STD; Walk/Run 38 dogs: 20"	8:00 AM	EX/MAS JWW; Walk/Run 32 dogs: 12"(16), 8"(15), 4"(1)
8:45 AM	EX/MAS STD; Walk/Run 31 dogs: 12"(15), 8"(15), 4"(1)	8:30 AM	EX/MAS JWW; Walk/Run 37 dogs: 24"(10), 16"(27)
9:35 AM	EX/MAS STD; Walk/Run 37 dogs: 24"(11), 16"(26) Course Change	9:20 AM	EX/MAS JWW; Walk/Run 42 dogs: 20" Course Change
10:45 AM	OPEN STD; Walk/Run 21 dogs: 24"(1), 20"(8) 16"(8), 12"(1), 8"(2), 4"(1) – Course Change	10:35 AM	NOVICE JWW ; Walk/Run 24 dogs: 24"(2), 20"(13) 16"(5), 12"(2), 8"(2) Course Change
11:45 AM	NOVICE STD; Walk/Run 21 dogs: 24"(2), 20"(9) 16"(5), 12"(3), 8"(2)	11:30 AM	OPEN JWW ; Walk/Run 15 dogs: 24"(2), 20"(3) 16"(6), 12"(1), 8"(2), 4"(1)

A LUNCH BREAK CAN BE TAKEN AT JUDGES' DISCRETION; WALK THRUS CAN BE SPLIT AT JUDGE'S DISCRETION

GO TO WWW.NTXAGILITY.COM FOR COMPLETE RESULTS AFTER THE TRIAL



MOTEL/RV PARK INFORMATION

NOTE: The club cannot guarantee that the hotels/motels listed below accept dogs. Please check regarding rates and dog acceptance policy when making reservations. A pet deposit *may* be required. Please check with the hotel for policies and restrictions.

Please inform management of your dogs when you book reservations and when you register. Motel dog regulations and fees may change without notice. The club cannot be responsible for any changes.

La Quinta Inn & Suites OKC North Quail Springs (405) 755.7000
3003 W Memorial Rd.
Oklahoma City OK 73134

La Quinta Inn & Suites Oklahoma City NW Expwy..... (877) 411-3436
4829 Northwest Expressway
Oklahoma City, OK, US 73132-5215

La Quinta Inn Oklahoma City Airport..... (877) 411-3436
800 S. Meridian Avenue
Oklahoma City, OK, US 73108

RV parking is not available on site. However, the following RV Parks are nearby

Twin Fountains RV Park (405) 475-5514
2727 NE 63rd St, Oklahoma City, OK

Council Road RV Park (405) 789-2103
8108 South West 8th Street, Oklahoma City, OK, US, <http://www.councilrdrvpark.com/>

Rockwell RV Park (405) 787-5992
720 South Rockwell, Oklahoma City, OK, <http://www.campusa.com/ok/rockwell/>

Exhibitors are expected to maintain hotel premises and their dogs in a quiet, clean and well-kept manner and for cleaning up after their dogs immediately on hotel/motel and show grounds. Motels/hotels require that dogs be crated when unattended; no bathing or grooming of dogs in guest rooms. Exhibitors/handlers are responsible for any damages to motels/hotels or the event site and may result in disciplinary action by the Trial Committee. Entries may be refused in the future for previous misuse of the motel facilities.

Complaints lodged against any exhibitor will be under the auspices of our Trial Committee and reported to the AKC. This is an AKC-supported measure.

PLEASE REMEMBER: Hotels do not have to allow us to keep our dogs in the rooms. We are all responsible for insuring future pet acceptance at our favorite hotels. Please clean up after your dogs (inside and outside), keep them quiet so as not to disturb other guests, and generally be considerate of others. We all want to continue to have nice places to stay when we travel with our dogs.

