



SoccerCity OKC
4520 Old Farm Rd
Oklahoma City, OK 73162

JUDGING PROGRAM

Red Dirt Agility Club of Oklahoma

AKC All-Breed Agility Trial
Open to All AKC-Recognized Breeds and All-American Dogs / Mixed Breed
Dogs Listed in the AKC Canine Partners Program

Friday – Monday (4 Days – Labor Day Weekend)
September 1, 2, 3, 4, 2017

EVENT NUMBERS
2017688408, 2017688409, 2017688410, 2017688411
INDOORS - AIR CONDITIONED ARENA WITH SOCCER TURF SURFACE

EVENT COMMITTEE EMERGENCY CONTACTS – Patrice Drummond - 405-317-9319 (Cell)

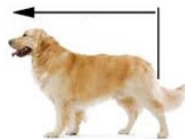
ARMBAND STICKERS NOT REQUIRED

Chapter 1, Section 19 of the Regulations for Agility Trials has been amended to eliminate the mandatory use of identifying stickers/armbands worn by agility exhibitors. RDAC is not requiring armband stickers.

Traditional check-in is not necessary. Please check in at the gate on the gate sheet prior to your class.

MEASUREMENTS

Exhibitors are required to have a valid Official Jump Height Card/ Valid yellow form for each of their dogs and must be able to present it at any time if requested during the trial.



Our Judge, Darryl C. Warren, is a Volunteer Measuring Official (VMO). ALL dogs (regardless of height) without a valid Jump Height Card or Yellow "Temporary Measurement" Form (for dogs under 2 years old) must be measured before their first run of the weekend. Forms will be available at the check-in table. Please fill out a form before requesting to be measured.

If your dog needs to be measured, it is YOUR responsibility to have a measurement done prior to running and failure to do so will result in the cancellation of any qualifying scores.

CONCESSIONS

Concessions will be available. Both fast food and restaurants are located within easy driving distance.

No other food or drink is allowed at the show site. Your cooperation is greatly appreciated. Use of Coolers: The use of small coolers is permitted for dog treats and dog food ONLY.

MOVE-UPS



Be sure to let the trial secretary know if you've earned a new title since you entered the trial so your dog can be moved up! Pre-trial move-ups must be submitted to the trial secretary via email **no later than Monday, August 28, 2017 at 6:00 pm.** Day-to-Day Move-Ups are permitted if you fill out a move-up form (available at the check-in table) and give it to the trial secretary at any time, but no later than 20 minutes after the last dog crosses the finish line on Fri for a Sat move-up, Sat. for a Sun. move-up or on Sun. for a Mon. move-up.

Arrival & Setup



Exhibitors are allowed to set up beginning at 12:00 Noon Friday, and at 7:00 am Saturday thru Monday.

To ensure there is adequate crating for everyone, mats are not allowed.

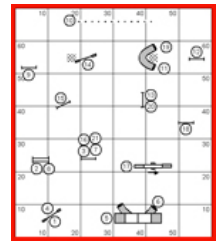
SET UP WILL NOT BE ALLOWED PRIOR TO 12:00 NOON ON FRIDAY.

CRATING SPACE WILL BE TIGHT. PLEASE BE COURTEOUS OF OTHER EXHIBITORS AND CONSERVE SPACE AS MUCH AS POSSIBLE. PLEASE NO MATS OR LARGE LOUNGE CHAIRS. X-PENS ARE ALLOWED FOR 3 OR MORE DOGS ONLY. THE TRIAL COMMITTEE HAS THE RIGHT TO ASK YOU TO COMPACT YOUR CRATING SPACE. THANK YOU IN ADVANCE!

DOGS MAY NOT BE LEFT IN THE BUILDING OVERNIGHT.

Running Order & Course Maps

The judges will supply course maps. Please take **ONE** copy of the map for the courses you are running so we will have sufficient copies for every exhibitor. Course maps and running orders will be posted in a prominent area. Running orders will also be posted at the gate for your convenience in determining where you are located in the running order.



WANT TO HELP???

We appreciate everyone who helps! Any and all assistance makes for a smoother running trial, so please check often during the trial to see how you can help!

Volunteer duties will not interfere with running your dog because you sign up for your own volunteer spots!

Volunteers receive snacks and a \$4.00 coupon that can be used for \$4.00 off lunch OR \$4.00 off a future Red Dirt event.

Even if you don't sign up on the volunteer form, your services could be needed. Please ask during the trial! THANK YOU!

MAKE IT EASY! Go to this Google Doc and fill in your name where you can help.

<http://tinyurl.com/jeapjrh>

RED DIRT AGILITY CLUB...



FIND US ON FACEBOOK

<http://tinyurl.com/ggdwc5q>

THE TRIAL SITE

IMPORTANT.... We are so excited to be able to host another agility trial at SoccerCity OKC indoor soccer arena. It is a fabulous facility and the management is happy to have us back because we are all courteous with parking and picking up after our dogs. Please help us keep this venue for agility trials by following a few simple rules!

- * Crating might be tight, so please don't spread out. Mats and large lounge-type chairs cannot be used. Xpens are allowed for 3 or more dogs only. The trial committee might ask you to condense your space if necessary. Please be courteous regarding this.... Everyone needs crating space.
- * No dogs on balcony.
- * No food or open containers on the turf.
- * Keep treats in a container on the turf.
- * No grooming inside the building.
- * **No parking on the street in the subdivision (they'll have you towed!!)**
- * Be respectful of the neighborhood surrounding the venue.
- * Keep your dogs on leash and as always ensure that you clean up after them.
- * There are walking trails nearby so please minimize exercising dogs in the subdivision.
- * **PLEASE KEEP ALL OUTSIDE DOORS CLOSED.** If you come in or go out, please be sure to close the door behind you! This has been a problem in the past and we need to be sure to keep it from happening. We need the cold air to stay inside, please!

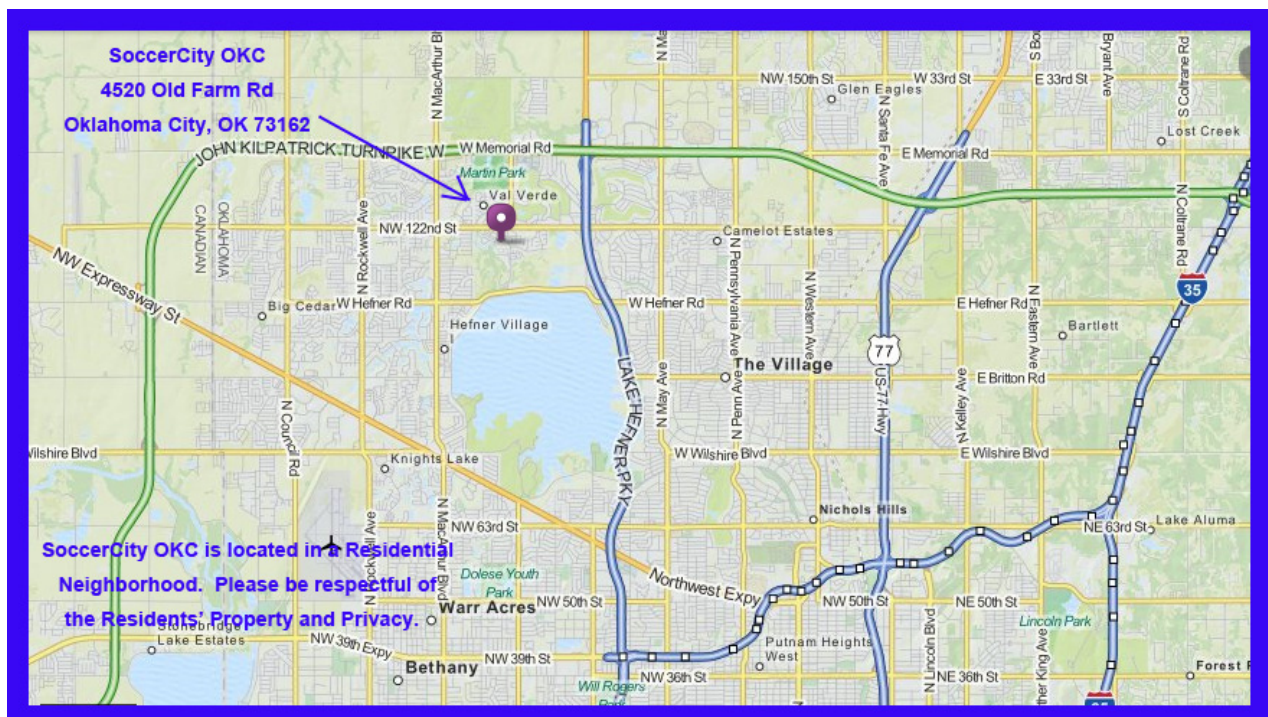
THIS TRIAL SITE IS IN A RESIDENTIAL AREA...

PLEASE RESPECT THE RESIDENTS' PROPERTY AND PRIVACY.

PLEASE DO NOT PARK ON THE STREET – YOU WILL BE TOWED.

This venue is in the middle of the Summerfield subdivision. Your GPS should be able to find the address correctly.

From OK-74 (Lake Hefner Parkway), take the Hefner Road exit and turn West towards the lake. Go about 2 miles, and turn right at Meridian Ave (at the stoplight). Go about .5 miles to Old Farm Rd. Turn left onto Old Farm Rd. Soccer City will be immediately on your left at 4520 Old Farm Road.



Veterinarians (On Call)



Neel Veterinary Hospital

2700 N MacArthur Blvd.

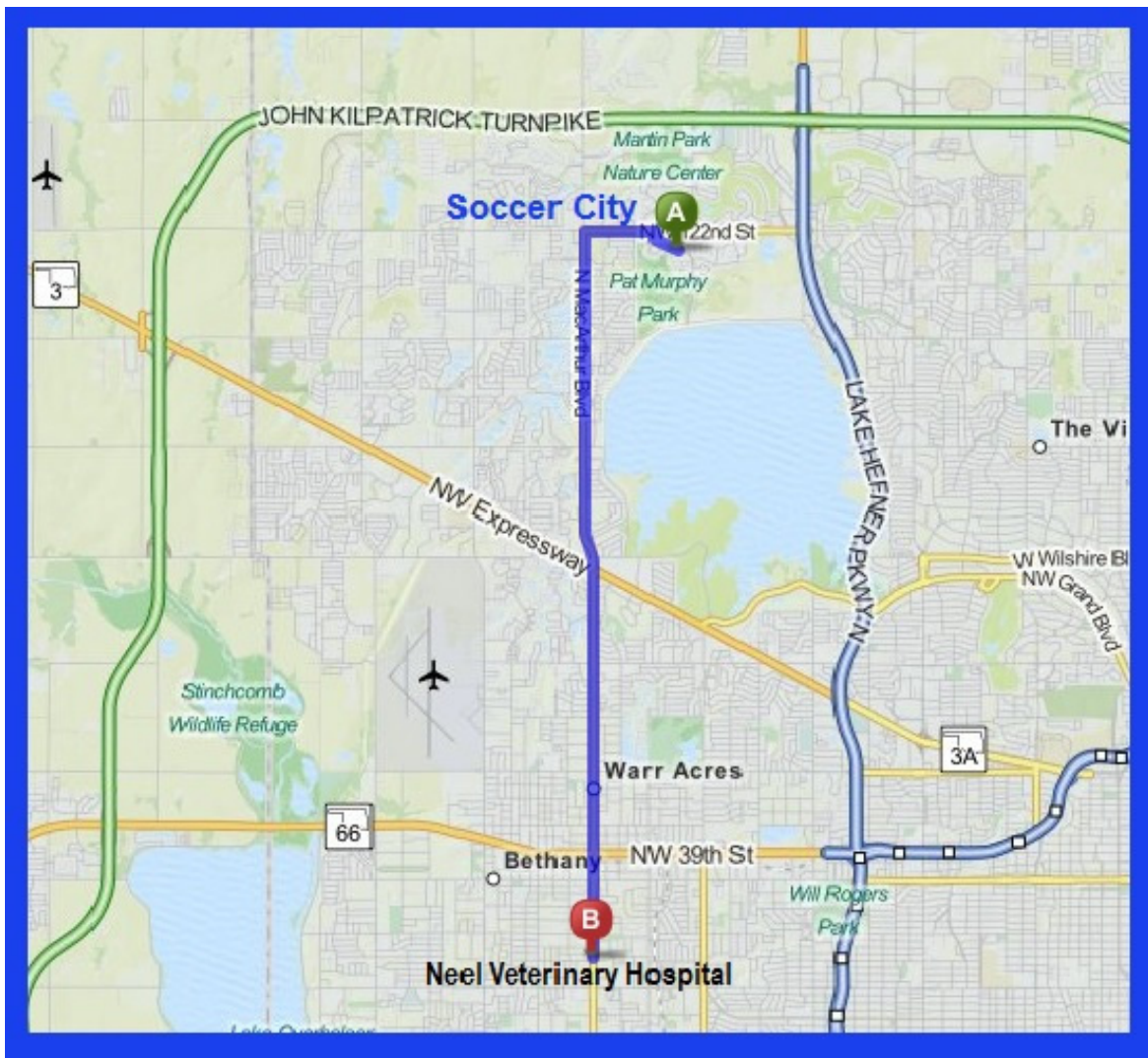
Oklahoma City, OK 73127

405-947-8387

Veterinarian office is open 24 hours/day, 7 days/week

TO VETERINARIAN FROM SHOW SITE - Approximate Travel Time: 16 Minutes

Start out going northeast on Old Farm Rd toward N Meridian Ave. (.05 mi). Take the 1st left onto N Meridian Ave. (.2 mi); (if you reach Dahoon Dr you've gone a little too far). Take the 1st right onto NW 122nd St (1.1 mil) (If you are on Kingsbrook Rd and reach Innsbrook Ln you've gone a little too far). Merge onto Lake Hefner Pky / OK-74 S. (5.8 mi). Merge onto NW 39th St / OK-66 W toward Warr Acres / Bethany. (2.5 mi). Turn left onto N MacArthur Blvd. (1 mi) (Grandy's is on the corner). 2700 N MACARTHUR BLVD is on the left.





Red Dirt Agility Club of Oklahoma

JUDGING SCHEDULE

Please notify the Gate Stewards of any running conflicts.

Conflicts will be handled on a case-by-case basis when/if they occur.

Class counts are contingent on move-ups not yet received and wait-list changes that have not yet been made.

Rings will run concurrently.

ALL TIMES (except for the starting times each day) ARE ESTIMATES.

TIMES ARE LISTED AS A COURTESY ONLY TO GIVE COMPETITORS AN IDEA OF WHEN THE CLASS WALK-THRUS COULD BEGIN.

Exhibitors are responsible for being at the ring when their turn is called.

Neither the Club nor the Judges will be responsible for the start times. Please plan your arrival accordingly.

Running Order, Friday, September 1, 2017 (317 Total Runs)

Ring 1 – Darryl Warren, Judge

Ring 2 – Lynn Morgan, Judge

INDIVIDUAL CLASSES WILL RUN TALL-TO-SMALL

APPROX. TIME	Briefing and Walk-Thru at 1:40 p.m.; Judging starts at 2:00 p.m.	APPROX. TIME	Briefing and Walk-Thru at 1:40 p.m.; Judging starts at 2:00 p.m.
2:00 PM	T2B–Run 36 dogs: 16”(11), 12”(17), 8”(7), 4”(1) Course Change	2:00 PM	T2B–Run 39 dogs: 24”(6), 20”(33); Course Change
2:50 PM	Exc/Mas Standard- Briefing/ Walk/Run 36 dogs: 12”(20), 8”(15), 4”(1)	2:55 PM	Exc/Mas JWW- Briefing/ Walk/Run 49 dogs: 20”
3:45 PM	Exc/Mas Standard- Walk/Run 34 dogs: 24”(12), 16”(22)	4:00 PM	Exc/Mas JWW - Walk/Run 40 dogs: 12”(22), 8”(16), 4”(2)
4:40 PM	Exc/Mas Standard- Walk/Run 49 dogs: 20”	4:55 PM	Exc/Mas JWW-Walk/Run 34 dogs: 24”(12), 16”(22)

A LUNCH BREAK CAN BE TAKEN AT JUDGES' DISCRETION; WALK THRUS CAN BE SPLIT AT JUDGE'S DISCRETION

GO TO WWW.NTXAGILITY.COM FOR COMPLETE RESULTS AFTER THE TRIAL

Running Order, Saturday, September 2, 2017 (590 Total Runs)

Ring 1 – Lynn Morgan, Judge

Ring 2 – Darryl Warren, Judge

INDIVIDUAL CLASSES WILL RUN SMALL-TO-TALL

APPROX. TIME	EX/MAS FAST Briefing and Walk-Thru at 8:10 a.m.; <u>JUDGING STARTS @ 8:30 am</u>	APPROX. TIME	T2B Briefing and General Walk-Thru start at 8:10 a.m.; Small-Dog Walk Thru begins when 16” EX/MAS FAST is finished in Ring 1 at approx 8:45 am. <u>JUDGING STARTS at approx. 9:00 am</u>
8:30 AM	Exc/Mas FAST-Run 33 dogs: 8”(2), 12”(5), 16”(7), 20”(17), 24”(2)	9:00 AM	T2B- Run 29 dogs: 8”(3), 12”(12), 16”(14)
9:05 AM	Open & Novice FAST Walk; Run 6 dogs: 16”(1), 20”(3) 24”(2); FOLLOWED IMMEDIATELY BY Novice FAST – Run 23 dogs: 8”(2), 12”(2), 16”(8), 20”(9), 24”(2); Course Change	9:30 AM	T2B-Walk/ Run 29 dogs: 20”(23), 24”(6) Course Change
		10:30 AM	Exc/Mas JWW – Briefing/ Walk/Run 58 dogs: 20”
10:05 AM	Exc/Mas Standard- Briefing/ Walk/Run 46 dogs: 4”(1), 8”(21), 12”(24)	11:45 AM	Exc/Mas JWW- Walk/Run 50 dogs: 4”(2), 8”(22), 12”(26)
11:15 AM	Exc/Mas Standard- Walk/Run 44 dogs: 16”(30), 24”(14)	12:50 PM	Exc/Mas JWW - Walk/Run 43 dogs: 16”(29), 24”(14) Course Change
12:25 PM	Exc/Mas Standard- Walk/Run 58 dogs: 20” Course Change	2:05 PM	Open JWW – Briefing/Walk/Run 28 dogs: 8”(3), 12”(3), 16”(8), 20”(10), 24”(4); Course Change
2:10 PM	Premier STD – Briefing/Walk/Run 39 dogs: 8”(4), 12”(3), 16”(6), 20”(18), 24”(8); Course Change	3:05 PM	Novice JWW - Briefing/Walk/Run 20 dogs: 8”(3), 12”(3), 16”(5), 20”(8), 24”(1); Course Change
3:25 PM	Open Standard – Briefing/Walk/Run 21 dogs: 8”(2), 12”(2), 16”(7), 20”(8), 24”(2); Course Change	3:55 PM	Premier JWW – Briefing/Walk/Run 36 dogs: 8”(2), 12”(4), 16”(5), 20”(20), 24”(5)
4:20 PM	Novice Standard-Briefing/Walk/Run 27 dogs: 8”(4), 12”(5), 16”(5), 20”(10), 24”(3)		

Running Order, Sunday, September 3, 2017 (600 Total Runs)			
Ring 1 - Darryl Warren, Judge		Ring 2 – Lynn Morgan, Judge	
INDIVIDUAL CLASSES WILL RUN TALL-TO-SMALL			
APPROX. TIME	EX/MAS FAST Briefing and Walk-Thru at 8:10 a.m.; <u>JUDGING STARTS @ 8:30 am</u>	APPROX. TIME	T2B Briefing and General Walk-Thru start at 8:10 a.m.; Tall-Dog Walk Thru begins when 20" EX/MAS FAST is finished in Ring 1 at approx 8:45 am. <u>JUDGING STARTS at approx. 9:00 am</u>
8:30 AM	Exc/Mas FAST-Run 34 dogs: 24"(2), 20"(17), 16"(8), 12"(5), 8"(2) NO Course Change	9:00 AM	T2B-Run 33 dogs: 24"(6), 20"(27)
9:05 AM	Open & Novice FAST Walk ; Run 4 Open dogs: 24"(2), 20"(1), 16"(1) Followed Immediately by: Novice FAST - Run 25 Novice dogs: 24"(2), 20"(8), 16"(9), 12"(4), 8"(2) Course Change	9:30 AM	T2B Walk/Run 32 dogs: 16"(16), 12"(13), 8"(3) Course Change
		10:30 AM	Exc/Mas JWW-Briefing/Walk/Run 57 dogs: 20"
10:05 AM	Exc/Mas Standard-Briefing/Walk/Run 45 dogs: 12"(23), 8"(21), 4"(1)	11:45 AM	Exc/Mas JWW - Walk/Run 49 dogs: 12"(25), 8"(22), 4"(2)
11:15 AM	Exc/Mas Standard- Walk/Run 47 dogs: 24"(15), 16"(32)	12:50 PM	Exc/Mas JWW-Walk/Run 44 dogs: 24"(14), 16"(30) Course Change
12:30 PM	Exc/Mas Standard- Walk/Run 57 dogs: 20" Course Change	2:05 PM	Open JWW – Walk/Run 29 dogs: 24"(5), 20"(10), 16"(8), 12"(4), 8"(2) Course Change
2:10 PM	Premier STD – Walk/Run 33 dogs: 24"(6), 20"(18), 16"(5), 12"(1), 8"(3) Course Change	3:05 PM	Novice JWW - Walk/Run 22 dogs: 24"(1), 20"(9), 16"(5), 12"(4), 8"(3) Course Change
3:15 PM	Open Standard - Walk/Run 22 dogs: 24"(2), 20"(8), 16"(7), 12"(3), 8"(2) Course Change	4:00 PM	Premier JWW – Walk/Run 38 dogs: 24"(5), 20"(19), 16"(6), 12"(4), 8"(3)
4:10 PM	Novice Standard - Walk/Run 29 dogs: 24"(3), 20"(11), 16"(5), 12"(6), 8"(4)		

A LUNCH BREAK CAN BE TAKEN AT JUDGES' DISCRETION; WALK THRUS CAN BE SPLIT AT JUDGE'S DISCRETION

GO TO WWW.NTXAGILITY.COM FOR COMPLETE RESULTS AFTER THE TRIAL

Running Order, Monday, September 4, 2017 (425 Total Runs)			
Ring 1 - Lynn Morgan, Judge		Ring 2 – Darryl Warren, Judge	
INDIVIDUAL CLASSES WILL RUN SMALL-TO-TALL			
APPROX. TIME	Briefing and Walk-Thru at 8:10 a.m.; <u>Judging starts at 8:30 a.m.</u>	APPROX. TIME	Briefing and Walk-Thru at 8:10 a.m.; <u>Judging starts at 8:30 a.m.</u>
8:30 AM	T2B- Run 35 dogs: 8"(5), 12"(14), 16"(16) Course Change	8:30 AM	T2B-Run 36 dogs: 20"(30), 24"(6) Course Change
9:20 AM	Exc/Mas Standard- Briefing/ Walk/Run 39 dogs: 8"(17), 12"(22)	9:20 AM	Exc/Mas JWW – Briefing/Walk/Run 52 dogs: 20"
10:20 AM	Exc/Mas Standard- Walk/Run 36 dogs: 16"(25), 24"(11)	10:30 AM	Exc/Mas JWW –Walk/Run 42 dogs: 8"(18), 12"(24)
11:20 AM	Exc/Mas Standard- Walk/Run 51 dogs: 20" Course Change	11:25 AM	Exc/Mas JWW-Walk/Run 32 dogs: 16"(22), 24"(10) Course Change
12:55 PM	Open Standard – Briefing/Walk/Run 19 dogs: 8"(2), 12"(3), 16"(6), 20"(6), 24"(2); Course Change	12:30 PM	Novice JWW - Briefing/Walk/Run 25 dogs: 8"(3), 12"(4), 16"(4), 20"(13), 24"(1); Course Change
1:50 PM	Novice Standard-Briefing/Walk/Run 31 dogs: 8"(4), 12"(6), 16"(5), 20"(14), 24"(2)	1:30 PM	Open JWW – Briefing/Walk/Run 27 dogs: 8"(2), 12"(3), 16"(10), 20"(8), 24"(4)

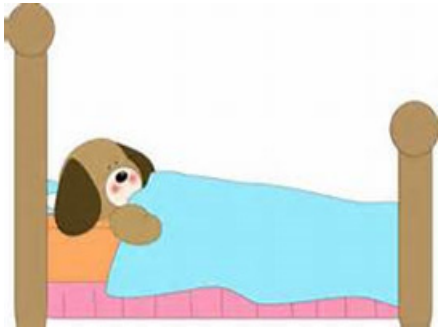
DON'T FORGET....

SATURDAY IS..... WEAR YOUR



SHIRT DAY!

Everyone wearing their RDAC Shirt On Saturday gets a prize!
Shirts will be available for purchase at the trial for your convenience.



MOTEL/RV PARK INFORMATION

NOTE: The club cannot guarantee that the hotels/motels listed below accept dogs. Please check regarding rates and dog acceptance policy when making reservations. A pet deposit *may* be required. Please check with the hotel for policies and restrictions.

Please inform management of your dogs when you book reservations and when you register. Motel dog regulations and fees may change without notice. The club cannot be responsible for any changes.

La Quinta Inn & Suites OKC North Quail Springs (405) 755.7000
3003 W Memorial Rd.
Oklahoma City OK 73134

La Quinta Inn & Suites Oklahoma City NW Expwy..... (877) 411-3436
4829 Northwest Expressway
Oklahoma City, OK, US 73132-5215

La Quinta Inn Oklahoma City Airport..... (877) 411-3436
800 S. Meridian Avenue
Oklahoma City, OK, US 73108

RV parking is not available on site. However, the following RV Parks are nearby

Twin Fountains RV Park (405) 475-5514
2727 NE 63rd St, Oklahoma City, OK

Council Road RV Park (405) 789-2103
8108 South West 8th Street, Oklahoma City, OK, US, <http://www.councilrdrvpark.com/>

Rockwell RV Park (405) 787-5992
720 South Rockwell, Oklahoma City, OK, <http://www.campusa.com/ok/rockwell/>

Exhibitors are expected to maintain hotel premises and their dogs in a quiet, clean and well-kept manner and for cleaning up after their dogs immediately on hotel/motel and show grounds. Motels/hotels require that dogs be crated when unattended; no bathing or grooming of dogs in guest rooms. Exhibitors/handlers are responsible for any damages to motels/hotels or the event site and may result in disciplinary action by the Trial Committee. Entries may be refused in the future for previous misuse of the motel facilities.

Complaints lodged against any exhibitor will be under the auspices of our Trial Committee and reported to the AKC. This is an AKC-supported measure.

PLEASE REMEMBER: Hotels do not have to allow us to keep our dogs in the rooms. We are all responsible for insuring future pet acceptance at our favorite hotels. Please clean up after your dogs (inside and outside), keep them quiet so as not to disturb other guests, and generally be considerate of others. We all want to continue to have nice places to stay when we travel with our dogs.

