

JUDGING PROGRAM

South Plains Obedience Training Club of Lubbock

AKC All-Breed Agility Trial in Lubbock, Texas

Friday, Saturday, Sunday, May 4, 5, 6, 2018

EVENT NUMBERS 2018269107, 2018269108, 2018269109

TEXAS TECH EQUESTRIAN CENTER
5712 CR 1500, Lubbock, TX 79407

To BE HELD INDOORS ON PACKED DIRT – NON-CLIMATE-CONTROLLED FACILITY

EVENT COMMITTEE EMERGENCY CONTACT – TERESA JANSSEN - 806.786.8661

Check-In and Measuring Info...

Chapter 1, Section 19 of the Regulations for Agility Trials has been amended to eliminate the mandatory use of identifying stickers/armbands worn by agility exhibitors. SPOTC is not requiring armband stickers.

Traditional check-in is not required. Please check in at the gate on the gate sheet prior to your class. **If your dog needs to be measured, it is YOUR responsibility to have a measurement done by the judge prior to running and failure to do so will result in the cancellation of any qualifying scores.**



Exhibitors are required to have a valid Official Jump Height Card/ Valid yellow form for each of their dogs and must be able to present it at any time if requested during the trial

There will be not be a Measuring Official at this trial. Measurements will not be official -- it will only get you through the weekend. If you are entered in Novice or Open, you do not have to get there early to be measured. It will be open all day. Measurements can be done before Novice or Open.

Concessions Available

Concessions will be available for breakfast and lunch all 3 days.



MOVE-UPS

Be sure to let the trial secretary know if you've earned a new title since you entered the trial so your dog can be moved up! Pre-trial move-ups must be submitted to the trial secretary via email no

later than 6:00 PM Monday, April 30. Day-to-Day Move-Ups are permitted if you fill out a move-up form (available at the check-in table) and give it to the trial secretary at any time, but no later than 20 minutes after the last dog crosses the finish line on Friday for a Saturday move-up or on Saturday for a Sunday move-up.

Arrival & Setup

Exhibitors are allowed to set up beginning no earlier than 10:00 am on Friday. Set up begins at 7:00 am on Saturday and Sunday.

VETERINARIANS – ON CALL



Live Oak Animal Hospital
5214 98th St, Ste 100
Lubbock, TX 79424
806-794-9000

Mon-Fri: 8am-10pm Sat-Sun: 8am-5pm
Maps from the show site to the Emergency Vet Clinic will be at the Exhibitors table.

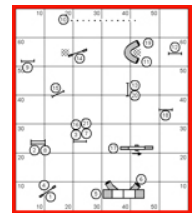
EMERGENCY/ DISASTER PROCEDURES:

Our emergency coordinator will be on the grounds throughout the show. A list of emergency contacts will be posted and the coordinator will assist you in receiving whatever assistance is needed.

FIRE: 806-765-5757 For Emergency Call 911
POLICE: 806-763-5333 For Emergency Call 911
AMBULANCE SERVICE- EMS- 911

Running Order & Course Maps

The judge will supply course maps. Please take **ONE** copy of the map for the courses you are running so we will have sufficient copies for every exhibitor. Course maps and running orders



will be posted in a prominent area. Running orders will also be posted at the gate for your convenience in determining where you are located in the running order.

WANT TO HELP???

WE LOVE OUR VOLUNTEERS

We need you!

Please email Volunteer Coordinator Volunteer coordinator:

Nancy Lewis - nancylakelewis@gmail.com

if you have questions before the trial. You may also sign-up at the trial. **The trial will run faster if we don't have to yell for volunteers. It takes as many volunteers for a small trial as a big trial.**

Volunteers receive \$3 coupon, good for future SPOTC entries or concession stand.

GO HERE AND SIGN UP WHERE YOU WOULD LIKE TO VOLUNTEER:

<http://tinyurl.com/SPOTC-Volunteers>

THANK YOU!!!!

Dogs may not be left in the building overnight.

MAP AND DIRECTIONS TO TRIAL SITE...



FROM WEST LOOP 289: Take 34th Street Exit and go west 2.5 miles to Upland Street. Left on Upland Street. Go south 1 mile on Upland to CR 6900 Right on CR 6900. Go west on CR 6900 1 mile to CR 1500. Left on CR 1500. Go south ½ mile to entrance to Equestrian Center - Proceed to parking lot

FROM HWY 62/82 SOUTHWEST OF LUBBOCK Turn north on to Upland Avenue and travel 1.1 miles to CR 6900. Turn left on CR 6900, and go 1 mile to CR 1500. Turn left on CR1500 and go south ½ mile to entrance to Equestrian Center. Proceed to parking lot.

ABOUT THE SHOW SITE: The Texas Tech Equestrian Center is an Indoor Arena with a Dirt arena surface. It is not climate controlled. Please Park in designated Exhibitor parking areas only. Parking is a short distance from the arena, you may want to bring a cart/dolly.

INDOOR SET UP RESTRICTIONS: No matting allowed on concrete, matting is allowed on the dirt. No X-Pens allowed in the building. Please cover crates with sheet from home. Please endeavor to keep barking at a minimum. No high-backed chairs (i.e. La Fuma style) lounge chairs allowed at ring side.

Exhibitors are expected to maintain hotel premises and their dogs in a quiet, clean and well-kept manner and for cleaning up after their dogs immediately on hotel/motel and show grounds. Motels/hotels require that dogs be crated when unattended; no bathing or grooming of dogs in guest rooms. Exhibitors/handlers are responsible for any damages to motels/hotels or the event site and may result in disciplinary action by the Trial Committee. Entries may be refused in the future for previous misuse of the motel facilities.

Complaints lodged against any exhibitor will be under the auspices of our Trial Committee and reported to the AKC. This is an AKC-supported measure.



PLEASE REMEMBER: Hotels do not have to allow us to keep our dogs in the rooms. We are all responsible for insuring future pet acceptance at our favorite hotels. Please clean up after your dogs (inside and outside), keep them quiet so as not to disturb other guests, and generally be considerate of others. We all want to continue to have nice places to stay when we travel with our dogs.



South Plains Obedience Training Club of Lubbock

JUDGING SCHEDULE

Class counts are contingent on move-ups not yet received.

Rings will run alternately

Walk-Throughs Can Be Split At the Judge's Discretion; Lunch Break at the Judge's Discretion

ALL TIMES (except for the starting time for the first class each day) ARE ESTIMATES. Times are listed as a courtesy only to give competitors an IDEA of when the classes/walk thrus could begin. Exhibitors are responsible for being at the ring when their turn is called. Neither the Club nor the Judge will be responsible for the start times. Please plan your arrival accordingly.

Judge: Ms. Karen Couch

FRIDAY, May 4, 2018 TOTAL 187 RUNS Judging starts at 12:00 P.M. 1 ST BRIEFING AND WALK AT 11:40 AM		SATURDAY, May 5, 2018 TOTAL 242 RUNS Judging starts at 8:00 A.M. 1 ST BRIEFING AND WALK AT 7:40 AM		SUNDAY, May 6, 2018 TOTAL 217 RUNS Judging starts at 8:00 A.M. 1 ST BRIEFING AND WALK AT 7:40 AM	
ALL START TIMES ARE APPROXIMATE (except for starting time for the first class each day)					
12:00 PM-Ring 1 Time-2-Beat	11:40- BRIEFING AND ALL T2B HEIGHTS WALK Total 27 dogs 12:00 PM - RUN 16 dogs: 24"(2); 20"(14) Ring Crew Change RUN 11 dogs: 16"(4), 12"(6), 8"(1)	8:00 AM - RING 1 Time-2-Beat	7:40 AM-BRIEFING AND ALL T2B HEIGHTS WALK Total 31 dogs RUN 18 dogs: 24"(3); 20"(15) Ring Crew Change RUN 13 dogs: 16"(5), 12"(7), 8"(1)	8:00 AM-Ring 2 Time-2-Beat	7:40 AM- BRIEFING AND ALL T2B HEIGHTS WALK Total 28 dogs RUN 16 dogs: 24"(3); 20"(13) Ring Crew Change RUN 12 dogs: 16"(6), 12"(6)
12:30 PM - Ring 2 Premier JWW	Briefing/Walk/Run 11 dogs: 24"(1), 20"(6), 16"(1), 12"(2), 8"(1)	8:40 AM - Ring 2 Exc/Mas JWW	Briefing/Walk/Run 29 Dogs: 24"(4); 20"(25) Walk/Run 37 Dogs: 16"(17), 12"(12), 8"(6). 4"(2)	8:35 AM- Ring 1 Premier STD	Briefing/Walk/Run 12 dogs; 24"(1), 20"(6), 16"(2), 12"(2), 8"(1)
12:55 PM - Ring 1 Exc/Mas STD	Briefing/Walk/Run 28 Dogs: 24"(4), 20"(24) Walk/Run 33 Dogs: 16"(15), 12"(12), 8"(4), 4"(2)	10:15 AM - Ring 1 Exc/Mas STD	Briefing/Walk/Run 31 Dogs: 24"(4); 20"(27) Walk/Run 37 Dogs: 16"(17), 12"(12), 8"(6). 4"(2)	9:00 AM - Ring 2 Exc/Mas JWW	Briefing/Walk/Run 29 Dogs: 24"(4); 20"(25) Walk/Run 38 Dogs: 16"(18), 12"(12), 8"(6). 4"(2)
2:45 PM - Ring 2 Exc/Mas JWW	Briefing/Walk/Run 27 Dogs: 24"(4), 20"(23) Walk/Run 34 Dogs: 16"(15), 12"(12), 8"(5), 4"(2)	12:10 PM - Ring 2 Open JWW	Briefing /Walk/Run 9 dogs: 24"(2), 20"(6), 16"(1)	10:35 AM - Ring 1 Exc/Mas STD	Briefing/Walk/Run 31 Dogs: 24"(4); 20"(27) Walk/Run 38 Dogs: 16"(18), 12"(12), 8"(6). 4"(2)
4:20 PM - Ring 1 ** FAST	Briefing/Walk/Run 27 dogs; EXC/MAS FAST: Run 18 dogs; 24"(2), 20"(6), 16"(3), 12"(3), 8"(2), 4"(2) Followed immediately by: **Open FAST - Run 5 dogs; 20"(2), 16"(1), 12"(0) 8"(1), 4"(1) followed immediately by: **Novice FAST - Run 4 dogs 20"(3), 16"(1)	12:35 PM - Ring 1 Open STD	Briefing/Walk/Run 7 dogs: 24"(1), 20"(4), 16"(2)	12:35 PM - Ring 2 Open JWW	Briefing/Walk/Run 8 dogs: 24"(1), 20"(6), 16"(1)
		1:00 pm Ring 2 Novice JWW	Briefing/Walk/Run 15 dogs: 24"(9), 20"(5), 16"(0), 12"(1)	12:55 PM - Ring 1 Open STD	Briefing/Walk/Run 8 dogs: 24"(1), 20"(4), 16"(2), 12"(0), 8"(0), 4"(1)
		1:30 PM - Ring 1 Novice STD	Briefing/Walk/Run 15 dogs: 24"(1), 20"(9), 16"(4), 12"(0), 8"(1)	1:35 PM - Ring 2 Novice JWW	Briefing/Walk/Run 13 dogs: 20"(7), 16"(5), 12"(0), 8"(1)
**NOTE: Per new FAST rules effective January 3, 2017, All FAST courses (Exc/Mas, Open, Novice) will be nested. There will not be a course build or walk-thru in between. A "Send" for each level will be marked on the course. There will be no walk thru or course build in between Exc/Mas and Open or between Open and Novice. Novice FAST will have 12 weave poles.		2:05 PM - Ring 2 ** FAST	Briefing/Walk/Run 31 dogs; **EXC/MAS FAST: Run 19 dogs; 24"(3), 20"(6), 16"(3), 12"(3), 8"(2), 4"(2) Followed immediately by: **Open FAST - Run 6 dogs; 20"(2), 16"(2), 12"(0), 8"(1), 4"(1) followed immediately by: **Novice FAST - Run 6 dogs 24"(1), 20"(4), 16"(1)	2:05 PM - Ring 1 Novice STD	Briefing/Walk/Run 12 dogs: 20"(7), 16"(4), 12"(0), 8"(1)
				Visit http://www.ntxagility.com for complete results after the trial	



MOTEL/RV PARK INFORMATION

Please inform management of your dogs when you book reservations and when you register.

NOTE: The club cannot guarantee that the hotels/motels listed below accept dogs. Please check regarding rates and dog acceptance policy when making reservations.

Motel dog regulations and fees may change without notice. The club cannot be responsible for any changes.

LaQuinta, 601 Ave Q, Lubbock, TX 79401	806-763-9441
La Quinta, 5006 Auburn St, Lubbock, Tx 79416.....	806.749.1600
La Quinta West/Medical Center, 4115 Marsha Sharp Fwy , Lubbock TX 79407	806.792.0065
Motel 6, 1-27 & 66th Street, Lubbock TX79412.....	806.745-5541
Best Western Lubbock Windsor Inn, 5410 I- 27, Lubbock, TX 79404.....	806.762.8400
Super 8 Civic Center. 501 Avenue Q, Lubbock, TX 79401	806.762.8726
Four Points Hotel Sheraton, 505 Avenue Q, Lubbock, TX 79401	806. 747.0171
Days Inn, 2401 - 4th Street, Lubbock, TX, 79415.....	806.747.7111
Studio 6 Motel, 4521 Marsha Sharp Frwy, Lubbock, TX 79401	806-687-6666 or 888.897.0202

RV INFORMATION

There are 29 Electric-only hookups at the show site available for \$20/night. Call the arena office at 806-792-4682 or email Patsy at patsy.mcbee@ttu.edu for reservations. First come, first served. The Arena Secretary will confirm if you have a reservation. No confirmation, no reservation.



Loop 289 RV Park, 3436 West Loop 289, Lubbock, TX 79404	806.792.4348
KOA Kamp ground, 5502 County Road 6300, Lubbock, TX 79416	806.762.8653
(2.5 mi west of Loop 289 on Hwy 84)	

Exhibitors are expected to maintain their premises and their dogs in a quiet, clean and well-kept manner. Complaints lodged against any exhibitor will be under the auspices of our Trial Committee and reported to the AKC. Exhibitors are responsible for cleaning up after their dogs at the trial site, all motels and RV areas.

Visit <http://www.ntxagility.com> for complete results after the trial