

# JUDGING PROGRAM

## South Plains Obedience Training Club of Lubbock

AKC All-Breed Agility Trial in Lubbock, Texas

Friday, Saturday, Sunday, November 9, 10, 11, 2018

EVENT NUMBERS 2018269112, 2018269113, 2018269114

TEXAS TECH EQUESTRIAN CENTER  
5712 CR 1500, Lubbock, TX 79407

To BE HELD INDOORS ON PACKED DIRT – NON-CLIMATE-CONTROLLED FACILITY

EVENT COMMITTEE EMERGENCY CONTACT – TERESA JANSSEN - 806.786.8661

### Check-In and Measuring Info...

Chapter 1, Section 19 of the Regulations for Agility Trials has been amended to eliminate the mandatory use of identifying stickers/armbands worn by agility exhibitors. SPOTC is not requiring armband stickers.



Traditional check-in is not required. Please check in at the gate on the gate sheet prior to your class.

The Judge, Christine Bishop, is a Measuring Official. If your dog needs to be measured, it is YOUR responsibility to have a measurement

done by the judge prior to running and failure to do so will result in the cancellation of any qualifying scores.

Exhibitors are required to have a valid Official Jump Height Card/ Valid yellow form for each of their dogs and must be able to present it at any time if requested during the trial

If you are entered in Novice or Open, you do not have to get there early to be measured. It will be open all day. Measurements can be done before Novice or Open.

### Concessions Available

Concessions will be available for breakfast (Sat & Sun only) and lunch all 3 days.

### MOVE-UPS

Be sure to let the trial secretary know if you've earned a new title since you entered the trial so your dog can be



moved up! Pre-trial move-ups must be submitted to the trial secretary via email no later than 6:00 PM Monday, November 5. Day-to-Day Move-Ups are permitted if you fill out a move-up form (available at the check-in table) and give it to the trial secretary at any time, but no later than 20 minutes after the last dog crosses the finish line on Friday for a Saturday move-up or on Saturday for a Sunday move-up.

### Arrival & Setup

Exhibitors are allowed to set up beginning no earlier than 10:00 am on Friday. Set up begins at 7:00 am on Saturday and Sunday.

### VETERINARIANS – ON CALL



Live Oak Animal Hospital  
5214 98th St, Ste 100  
Lubbock, TX 79424  
806-794-9000

Mon-Fri: 8am-10pm Sat-Sun: 8am-5pm  
Maps from the show site to the Emergency Vet Clinic will be at the Exhibitors table.

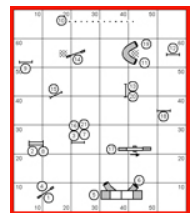
### EMERGENCY/ DISASTER PROCEDURES:

Our emergency coordinator will be on the grounds throughout the show. A list of emergency contacts will be posted and the coordinator will assist you in receiving whatever assistance is needed.

FIRE: 806-765-5757 For Emergency Call 911  
POLICE: 806-763-5333 For Emergency Call 911  
AMBULANCE SERVICE- EMS- 911

### RUNNING ORDER & COURSE MAPS

The judge will supply course maps. Please take **ONE** copy of the map for the courses you are running so we will have sufficient copies for every exhibitor. Course maps and running orders will be posted in a prominent area. Running orders will also be posted at the gate for your convenience in determining where you are located in the running order.



### WANT TO HELP???



We need you!

Please email Volunteer Coordinator Volunteer coordinator:

Nancy Lewis - [nancylakelewis@gmail.com](mailto:nancylakelewis@gmail.com)

if you have questions before the trial. You may also sign-up at the trial. The trial will run faster if we don't have to yell for volunteers. It takes as many volunteers for a small trial as a big trial.

Volunteers receive \$3 coupon, good for future SPOTC entries or concession stand.

GO HERE AND SIGN UP WHERE YOU WOULD LIKE TO VOLUNTEER:

<http://tinyurl.com/SPOTC-Volunteers>

THANK YOU!!!!

\*\*\*\*\*

Dogs may not be left in the building overnight.

# MAP AND DIRECTIONS TO TRIAL SITE...



**FROM WEST LOOP 289:** Take 34th Street Exit and go west 2.5 miles to Upland Street. Left on Upland Street. Go south 1 mile on Upland to CR 6900 Right on CR 6900. Go west on CR 6900 1 mile to CR 1500. Left on CR 1500. Go south ½ mile to entrance to Equestrian Center - Proceed to parking lot

**FROM HWY 62/82 SOUTHWEST OF LUBBOCK** Turn north on to Upland Avenue and travel 1.1 miles to CR 6900. Turn left on CR 6900, and go 1 mile to CR 1500. Turn left on CR1500 and go south ½ mile to entrance to Equestrian Center. Proceed to parking lot.

**ABOUT THE SHOW SITE:** The Texas Tech Equestrian Center is an Indoor Arena with a Dirt arena surface. It is not climate controlled. Please Park in designated Exhibitor parking areas only. Parking is a short distance from the arena, you may want to bring a cart/dolly.

**INDOOR SET UP RESTRICTIONS:** No matting allowed on concrete, matting is allowed on the dirt. No X-Pens allowed in the building. Please cover crates with sheet from home. Please endeavor to keep barking at a minimum. No high-backed chairs (i.e. La Fuma style) lounge chairs allowed at ring side.

**Exhibitors are expected to maintain hotel premises and their dogs in a quiet, clean and well-kept manner and for cleaning up after their dogs immediately on hotel/motel and show grounds.** Motels/hotels require that dogs be crated when unattended; no bathing or grooming of dogs in guest rooms. Exhibitors/handlers are responsible for any damages to motels/hotels or the event site and may result in disciplinary action by the Trial Committee. Entries may be refused in the future for previous misuse of the motel facilities.

**Complaints lodged against any exhibitor will be under the auspices of our Trial Committee and reported to the AKC.** This is an AKC-supported measure.



**PLEASE REMEMBER:** Hotels do not have to allow us to keep our dogs in the rooms. We are all responsible for insuring future pet acceptance at our favorite hotels. Please clean up after your dogs (inside and outside), keep them quiet so as not to disturb other guests, and generally be considerate of others. We all want to continue to have nice places to stay when we travel with our dogs.



# South Plains Obedience Training Club of Lubbock

## JUDGING SCHEDULE

**Class counts are contingent on move-ups not yet received.**

Rings will run alternately

Walk-Throughs Can Be Split At the Judge's Discretion; Lunch Break at the Judge's Discretion

**ALL TIMES (except for the starting time for the first class each day) ARE ESTIMATES. Times are listed as a courtesy only to give competitors an IDEA of when the classes/WALK THRUS could begin. Exhibitors are responsible for being at the ring when their turn is called. Neither the Club nor the Judge will be responsible for the start times. Please plan your arrival accordingly.**

**Judge: Ms. Christine Bishop**

FRIDAY, November 9, 2018 TOTAL 207 RUNS <b>Judging starts at 12:00 P.M.</b> 1 <sup>ST</sup> BRIEFING AND WALK AT 11:40 AM		SATURDAY, November 10, 2018 TOTAL 278 RUNS <b>Judging starts at 9:00 A.M.</b> 1 <sup>ST</sup> BRIEFING AND WALK AT 8:40 AM		SUNDAY, November 11, 2018 TOTAL 231 RUNS <b>Judging starts at 8:00 A.M.</b> 1 <sup>ST</sup> BRIEFING AND WALK AT 7:40 AM	
ALL START TIMES ARE APPROXIMATE (except for starting time for the first class each day)					
TALL-TO-SMALL		SMALL-TO-TALL		TALL-TO-SMALL	
12:00 PM-Ring 2 <b>ALL FAST</b>	<u>All Levels Of Fast Will Walk Together... Open &amp; Novice Will Run Concurrently With Ex/Mas In Jump-Height Order.</u> RUN 14 dogs: 24C(1); 24"(3); 20"(10) <b>Ring Crew Change</b> RUN 15 dogs: 16"(6), 12"(7), 8"(2)	9:00 AM - RING 2 <b>ALL FAST</b>	<u>All Levels Of Fast Will Walk Together... Open &amp; Novice Will Run Concurrently With Ex/Mas In Jump-Height Order.</u> RUN 17 dogs: 20"(11), 24"(5), 24C(1) <b>Ring Crew Change</b> RUN 28 dogs: 8"(5), 12"(10), 16"(13)	8:00 AM-Ring 2 <b>Time-2-Beat</b>	<b>7:40 AM- BRIEFING AND ALL T2B HEIGHTS WALK</b>  RUN 15 dogs: 24C(1), 24"(4); 20"(10) <b>Ring Crew Change</b> RUN 17 dogs: 16"(6), 12"(5), 8"(6)
12:35 PM - Ring 1 <b>T2B</b>	Briefing/Walk/Run 31 dogs; 24"(3), 20"(9), 16"(8), 12"(5), 8"(6)	9:50 AM - Ring 1 <b>T2B</b>	Briefing/Walk/Run 34 dogs; 8"(8), 12"(5), 16"(7), 20"(10), 24"(4)	8:35 AM- Ring 1 <b>Premier STD</b>	Briefing/Walk/Run 23 dogs; 24"(2), 20"(9), 16"(5), 12"(4), 8"(2), 4"(1)
1:25 PM - Ring 2 <b>Premier JWW</b>	Briefing/Walk/Run 18 Dogs: 24"(2), 20"(7), 16"(5), 12"(3), 8"(1)	10:45 AM - Ring 2 <b>Exc/Mas JWW</b>	Briefing/Walk/Run 32 dogs: 20"(27), 24"(5) Walk/Run 47 Dogs: 4"(1), 8"(10), 12"(17), 16"(19)	9:15 AM - Ring 2 <b>Exc/Mas JWW</b>	Briefing/Walk/Run 30 Dogs: 24"(4), 20"(26) Walk/Run 44 Dogs: 16"(18), 12"(18), 8"(7), 4"(1)
2:10 PM - Ring 1 <b>Exc/Mas STD</b>	Briefing/Walk/Run 28 Dogs: 24"(3), 20"(25) Walk/Run 34 Dogs: 16"(14), 12"(13), 8"(6), 4"(1)	12:30 PM - Ring 1 <b>Exc/Mas STD</b>	Briefing/Walk/Run 31 dogs: 20"(27), 24"(4) Walk/Run 45 Dogs: 4"(1), 8"(10), 12"(15), 16"(19)	11:05 AM - Ring 1 <b>Exc/Mas STD</b>	Briefing/Walk/Run 29 Dogs: 24"(3), 20"(26) Walk/Run 41 Dogs: 16"(17), 12"(15), 8"(8), 4"(1)
4:05 PM - Ring 2 <b>Exc/Mas JWW</b>	Briefing/Walk/Run 29 Dogs: 24"(3), 20"(26) Walk/Run 38 Dogs: 16"(17), 12"(14), 8"(6), 4"(1)	2:45 PM - Ring 2 <b>Open JWW</b>	Briefing/Walk/Run 10 dogs; 8"(3), 12"(2), 16"(1), 20"(3), 24"(1)	1:05 PM - Ring 2 <b>Open JWW</b>	Briefing /Walk/Run 8 dogs: 24"(1), 20"(3), 16"(2), 12"(0), 8"(2)
		3:15 PM - Ring 1 <b>Open STD</b>	Briefing/Walk/Run 8 dogs; 8"(1), 12"(1), 16"(2), 20"(2), 24"(2)	1:35 PM - Ring 1 <b>Open STD</b>	Briefing/Walk/Run 8 dogs: 24"(2), 20"(2), 16"(2), 12"(1), 8"(1)
		3:45 pm Ring 2 <b>Novice JWW</b>	Briefing/Walk/Run 12 dogs; 8"(0), 12"(2), 16"(5), 20"(3), 24"(1), 24C(1)	2:10 PM - Ring 2 <b>Novice JWW</b>	Briefing/Walk/Run 8 dogs: 24"(1), 20"(1), 16"(2), 12"(3), 8"(1)
		4:15 PM - Ring 1 <b>Novice STD</b>	Briefing/Walk/Run 14 dogs; 8"(1), 12"(3), 16"(4), 20"(4), 24"(1), 24C(1)	2:40 PM - Ring 1 <b>Novice STD</b>	Briefing/Walk/Run 8 dogs: 24"(1), 20"(1), 16"(3), 12"(2), 8"(1)

## MOTEL/RV PARK INFORMATION



Please inform management of your dogs when you book reservations and when you register.

**NOTE:** The club cannot guarantee that the hotels/motels listed below accept dogs. Please check regarding rates and dog acceptance policy when making reservations.

**Motel dog regulations and fees may change without notice. The club cannot be responsible for any changes.**

LaQuinta, 601 Ave Q, Lubbock, TX 79401 .....	806-763-9441
La Quinta, 5006 Auburn St, Lubbock, Tx 79416 .....	806.749.1600
La Quinta West/Medical Center, 4115 Marsha Sharp Fwy , Lubbock TX 79407 .....	806.792.0065
Motel 6, 1-27 & 66th Street, Lubbock TX79412 .....	806.745-5541
Best Western Lubbock Windsor Inn, 5410 I- 27, Lubbock, TX 79404 .....	806.762.8400
Super 8 Civic Center. 501 Avenue Q, Lubbock, TX 79401.....	806.762.8726
Four Points Hotel Sheraton, 505 Avenue Q, Lubbock, TX 79401 .....	806. 747.0171
Days Inn, 2401 - 4th Street, Lubbock, TX, 79415 .....	806.747.7111
Studio 6 Motel, 4521 Marsha Sharp Frwy, Lubbock, TX 79401 .....	806-687-6666 or 888.897.0202

## RV INFORMATION

There are 29 Electric-only hookups at the show site available for \$20/night. Call the arena office at 806-792-4682 or email Patsy at patsy.mcbee@ttu.edu for reservations. First come, first served. The Arena Secretary will confirm if you have a reservation. No confirmation, no reservation.

Loop 289 RV Park, 3436 West Loop 289, Lubbock, TX 79404.....	806.792.4348
KOA Kamp ground, 5502 County Road 6300, Lubbock, TX 79416 .....	806.762.8653
(2.5 mi west of Loop 289 on Hwy 84)	



## IMPORTANT INFO...



**Exhibitors are responsible for cleaning up after their dogs immediately on hotel/motel and show grounds.** Motels/hotels require that dogs be crated when unattended; no bathing or grooming of dogs in guest rooms. Exhibitors/handlers are responsible for any damages to motels/hotels or the event site and may result in disciplinary action by the Trial Committee. Entries may be refused in the future for previous misuse of the motel facilities. This is an AKC-supported measure.

**PLEASE REMEMBER:** Hotels do not have to allow us to keep our dogs in the rooms. We are all responsible for insuring future pet acceptance at our favorite hotels. Please clean up after your dogs (inside and outside), keep them quiet so as not to disturb other guests, and generally be considerate of others. We all want to continue to have nice places to stay when we travel with our dogs.

Visit <http://www.ntxagility.com> for complete results after the trial