



JUDGING PROGRAM

Red Dirt Agility Club of Oklahoma

AKC All-Breed Agility Trial in Shawnee, OK

Friday-Sunday, January 11, 12, 13, 2019

Heart of Oklahoma
Exposition Center
FRED HUMPHREY ARENA

1700 W. Independence
Shawnee, OK 74802-1466

EVENT NUMBERS

2019688401, 2019688402, 2019688403

INDOORS – HEATED FACILITY WITH PACKED DIRT SURFACE

EVENT COMMITTEE EMERGENCY CONTACT – Patrice Drummond – 405.317.9319

Check-In

ARMBANDS NOT REQUIRED

Pursuant to Chapter 1, Section 19 of the Regulations for Agility Trials, RDAC is not requiring armband stickers.

Traditional check-in is not necessary. Please check in at the gate on the gate sheet prior to your class.

MEASURING



All agility dogs are required to have an Official Jump Height Card and must be able to present it if asked. Be sure to bring your height card with you in case someone asks for it.

There is a good chance that an AKC Rep will be present at the trial. Measurements by an AKC Rep will be official. Measurements by either judge will not be official and will only get you through the weekend. All dogs over 2 years old without a permanent height card and dogs under 2 years old without a yellow temporary measurement sheet **must be measured before running**. Measurements will be done all day between classes.

It is the exhibitor's responsibility to have their dog measured prior to running.

CONCESSIONS!

Concessions will be available during trial hours all 3 days. Both fast food and restaurants are located within easy driving distance.

No outside food or drink is allowed.

Your cooperation is greatly appreciated.

MOVE-UPS

Be sure to let the trial secretary know if you've earned a new title since you entered the trial so your dog can be moved up!



Pre-trial move-ups must be submitted to the trial secretary via email **no later than 6:00 PM Monday, January 7. Day-to-Day Move-Ups are permitted** if you fill out a move-up form (available at the check-in table) and give it to the trial secretary at any time, but no later than 20 minutes after the last dog crosses the finish line on Friday for a Saturday move-up or on Saturday for a Sunday move-up.



Arrival & Setup

Set up is allowed beginning a 1:00 pm on Thursday, January 10. The B-Match starts at 5:30 pm Thursday.

The building will be open at 6:45 AM Friday, Saturday & Sunday

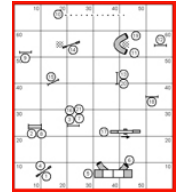
RED DIRT AGILITY CLUB...
FIND US ON FACEBOOK



<http://tinyurl.com/mx9d5tg>

Running Order & Course Maps

The judges will supply course maps. Please take **ONE** copy of the map for the courses you are running so we will have sufficient copies for every exhibitor. Course maps



and running orders will be posted in a prominent area. Running orders will also be posted at the gate for your convenience in determining where you are located in the running order.

WANT TO HELP???

We wish to thank all those who volunteer to help at this trial! Volunteers will receive a \$4 coupon that can be used for the concession stand or discount on a future trial.

SCHEDULE YOURSELF: Fill in your name in some time slots on our Volunteer Google Doc:

<http://tinyurl.com/m7sr3tw>

To edit on an iPhone / iPad, you must first download the FREE "Google Sheets" App from the Apple App Store.

Please visit the Red Dirt Agility Club Hospitality booth. Helpers will be there to answer any questions you may have. We will also be selling Red Dirt t-shirts!

Dogs May Not Be Left In the Building Overnight.



SPECIAL PRIZE!! GET A DIARY QUEEN COUPON FOR A DOUBLE Q!!*
(QQ=QUALIFYING RUNS IN MASTER STD & MASTER JWW ON THE SAME DAY)

PLEASE SEE TRIAL SECRETARY TO COLLECT!

***WHILE SUPPLY LASTS**



SANCTIONED B MATCH

THURSDAY (JAN 10) EVENING... 5:30 – 8:00 PM

OPEN TO EVERYONE!

\$10–First Run; \$5–Second Run

**Day-Of Entries Only
Entries Open at 2:00 pm
On Thursday, January 10
At Show Site**

Building Opens at 1:00 PM Thursday

DOG PARK!

There are two fenced-in dog parks across the street from the show site for your Fido's convenience! Please abide by all posted rules at the dog park! Please be sure you pick up after your dog on the Expo grounds, at the dog park and at the local hotels.



RESTAURANTS

There are two good restaurants just down the street from the Expo, one is Abuleta's Mexican Grill and the other Bandanna Reds (formerly Jay's Steakhouse).

If you head out east of the Expo on W. Independence St. and then north on Kickapoo all the way up to I-40 you will be in the vicinity of the Shawnee Mall with all the typical chain restaurants like Starbucks, Golden Corral, IHOP, Chilis, Red Lobster and the Santa Fe Cattle Co, plus the usual fast food restaurants Pizza Hut, Taco Bell, KFC, etc.

Check out some of the local establishments including the new Bricktown Brewery, Van's Pig Stand, Maple Garden, Sunrise Chinese and the Phoenix Asian Dinner.



Red Dirt Agility Club of Oklahoma JUDGING SCHEDULE

ESTIMATED TIMES/RUNNING ORDER:

Class Counts Are Contingent On Move-Ups Not Yet Received.

PLEASE CHECK YOUR RUNNING ORDER AND JUMP HEIGHTS CAREFULLY

**PLEASE NOTIFY GATE STEWARD OF ANY CONFLICTS.
CONFLICTS WILL BE HANDLED IF/WHEN THEY OCCUR.**

ALL TIMES (except for the first starting time each day) ARE ESTIMATES.

TIMES ARE LISTED AS A COURTESY ONLY TO GIVE COMPETITORS AN IDEA OF WHEN THE CLASS WALK-THRUS COULD BEGIN.

Neither the Club nor the Judges will be responsible for the start times. Please plan your arrival accordingly.

Running Order, Friday, January 11, 2019 (466 Total Runs)

Ring 1 – Zach Davis, Judge		Ring 2 – Leslie Gregory, Judge (Provisional)	
APPROX. TIME	Briefing and Walk-Thru at 7:40 a.m.; Judging starts at 8:00 a.m.	APPROX. TIME	Briefing and Walk-Thru at 7:40 a.m.; Judging starts at 8:30 a.m.
8:00 AM	PREMIER STD; Walk/Run 48 dogs; 8"(3), 12"(4), 16"(11), 20"(26), 24"(4) COURSE CHANGE	8:30 AM	T2B Run 39 dogs; 8"(3); 12"(16), 16"(20)
9:00 AM	EX/MAS STD; Walk/Run 48 dogs; 4"(1), 8"(9); 12"(14), 16"(24)	9:10 AM	T2B Walk/Run 35 dogs; 20"(30), 24"(5) COURSE CHANGE
10:15 AM	EX/MAS STD; Walk/Run 57 dogs; 20"(48), 24"(9) COURSE CHANGE	10:15 AM	OPEN STD; Walk/Run 19 dogs; 8"(0); 12"(4), 16"(5), 20"(7), 24"(3) COURSE CHANGE
11:55 AM	PREMIER JWW; Walk/Run 42 dogs; 8"(1), 12"(5), 16"(10), 20"(22), 24"(4) COURSE CHANGE	11:10 AM	NOVICE STD; Walk/Run 24 dogs; 8"(1); 12"(7), 16"(4), 20"(6), 24"(6) COURSE CHANGE
1:05 PM	EX/MAS JWW; Walk/Run 51 dogs; 4"(1), 8"(9); 12"(17), 16"(24)	12:15 PM	OPEN JWW; Walk/Run 24 dogs; 8"(2); 12"(5), 16"(4), 20"(7), 24"(6) COURSE CHANGE
2:10 PM	EX/MAS JWW; Walk/Run 59 dogs; 20"(49), 24"(10)	1:10 PM	NOVICE JWW; Walk/Run Run 20 dogs; 8"(1); 12"(6), 16"(4), 20"(6), 24"(3)

A LUNCH BREAK CAN BE TAKEN AT JUDGES' DISCRETION; WALK THRUS CAN BE SPLIT AT JUDGE'S DISCRETION

Running Order, Saturday, January 12, 2019 (560 Total Runs)

Ring 1 – Zach Davis, Judge		Ring 2 – Leslie Gregory, Judge (Provisional)	
APPROX. TIME	Briefing and Walk-Thru at 7:40 a.m.; Judging starts at 8:00 a.m.	APPROX. TIME	Briefing and Walk-Thru at 7:40 a.m.; Judging starts at 8:30 a.m.
8:00 AM	PREMIER JWW; Walk/Run 56 dogs; 8"(3), 12"(9), 16"(15), 20"(22), 24"(7) COURSE CHANGE	8:30 AM	EX/MAS FAST Run 53 dogs; 8"(3); 12"(6), 16"(20), 20"(21), 24"(3) NO COURSE CHANGE
9:10 AM	EX/MAS JWW; SPLIT WALK THRU - Walk/Walk/Run 75 dogs; 4"(1), 8"(15); 12"(26), 16"(33)	9:25 AM	OPEN & NOVICE FAST (Both levels run together) Walk 48 dogs; 8"(2); 12"(14), 16"(8), 20"(20), 24"(4) COURSE CHANGE
10:50 AM	EX/MAS JWW; SPLIT WALK THRU - Walk/Walk/Run 64 dogs; 20"(52), 24"(12) COURSE CHANGE	10:50 AM	OPEN STD ; Walk/Run 33 dogs; 8"(0); 12"(6), 16"(9), 20"(13), 24"(5) COURSE CHANGE
12:35 PM	EX/MAS STD; SPLIT WALK THRU - Walk/Walk/Run 73 dogs; 4"(1), 8"(16); 12"(23), 16"(33)	12:05 PM	NOVICE STD ; Walk/Run 31 dogs; 8"(1); 12"(9), 16"(5), 20"(9), 24"(7)
2:30 PM	EX/MAS STD; SPLIT WALK THRU - Walk/Walk/Run 62 dogs; 20"(51), 24"(11) COURSE CHANGE	1:20 PM	OPEN JWW; Walk/Run 39 dogs; 8"(2); 12"(7), 16"(8), 20"(14), 24"(8) COURSE CHANGE
		2:35 PM	NOVICE JWW; Walk/Run Run 26 dogs; 8"(1); 12"(6), 16"(7), 20"(8), 24"(4) COURSE CHANGE

GO TO WWW.NTXAGILITY.COM FOR COMPLETE RESULTS AFTER THE TRIAL

Running Order, Sunday, January 13, 2019 (488 Total Runs)

Ring 1 – Zach Davis, Judge		Ring 2 – Leslie Gregory, Judge (Provisional)	
APPROX. TIME	Briefing and Walk-Thru at 7:40 a.m.; Judging starts at 8:00 a.m.	APPROX. TIME	Briefing and Walk-Thru at 7:40 a.m.; Judging starts at 8:30 a.m.
8:00 AM	PREMIER STD; Walk/Run 48 dogs; 8"(3), 12"(7), 16"(12), 20"(21), 24"(5) COURSE CHANGE	8:30 AM	T2B Run 38 dogs; 8(1); 12"(14), 16"(23)
9:00 AM	EX/MAS STD; SPLIT WALK THRU - Walk/Walk/Run 65 dogs; 4"(1), 8"(14), 12"(17), 16"(33)	9:10 AM	T2B Run 42 dogs; 20"(33), 24"(9) COURSE CHANGE
10:50 AM	EX/MAS STD; SPLIT WALK THRU - Walk/Walk/Run 55 dogs; 20"(45), 24"(10) COURSE CHANGE	10:20 AM	OPEN STD; Walk/Run 32 dogs; 8"(0); 12"(5), 16"(10), 20"(12), 24"(5) COURSE CHANGE
12:40 PM	EX/MAS JWW; SPLIT WALK THRU - Walk/Walk/Run 69 dogs; 4"(1), 8"(14), 12"(21), 16"(33)	11:35 AM	NOVICE STD; Walk/Run 26 dogs; 8"(1); 12"(9), 16"(2), 20"(7), 24"(7) COURSE CHANGE
2:05 PM	EX/MAS JWW; SPLIT WALK THRU - Walk/Walk/Run 57 dogs; 20"(46), 24"(11)	12:40 PM	OPEN JWW; Walk/Run 36 dogs; 8"(2); 12"(6), 16"(7), 20"(13), 24"(8) COURSE CHANGE
		1:50 PM	NOVICE JWW; Walk/Run 20 dogs; 8"(1); 12"(5), 16"(4), 20"(6), 24"(4)

A LUNCH BREAK CAN BE TAKEN AT JUDGES' DISCRETION; WALK THRUS CAN BE SPLIT AT JUDGE'S DISCRETION

GO TO WWW.NTXAGILITY.COM FOR COMPLETE RESULTS AFTER THE TRIAL

MOTEL/RV PARK INFORMATION

NOTE: The club cannot guarantee that the hotels/motels listed below accept dogs. Please check regarding rates and dog acceptance policy when making reservations. A pet deposit *may* be required. Please check with the hotel for policies and restrictions.

Please inform management of your dogs when you book reservations and when you register. Motel dog regulations and fees may change without notice. The club cannot be responsible for any changes.



AREA ACCOMMODATIONS

Pet friendly accommodations in the Shawnee area.

La Quinta Shawnee 5401 Enterprise Court, Shawnee, OK 74804	(405) 275-7930
Motel 6, 4981 North Harrison Street, Shawnee, OK 74804	(405) 275-5310
Super 8, I-40 & Hwy 18, Shawnee, OK 74802	(405) 275-0089
Colonial Inn, 4700 N. Harrison, Shawnee, OK 74804	(405) 878-0120
American Inn, 5501 N. Harrison, Shawnee, OK 74804	(405) 273-2000
Sheraton Hotel, 5750 Will Rogers Rd, Midwest City, OK 73110	(405) 455-1800
Hawthorn Suites, 5701 Tinker Diagonal, Midwest City, OK 73110	(405) 737-7777
Super 8, 6166 Tinker Diagonal, Midwest City, OK 73110	(405) 732-3800
Candlewood Suites Midwest City, 5300 Main Street, Del City, OK 73115.....	(405) 604-5300

(Check with hotel for discounted pet fee)

PLEASE KEEP DOGS QUIET AND PICK UP AFTER THEM

Help us keep our motels by acting responsibly!

RV PARKING

[Heart of Oklahoma Expo RV Park](#) - Highway 177 & Leo, Shawnee, OK 405-275-7020

The park is on-site at the Expo Center and features 284 full-service hook ups and 500 additional limited service spaces. The park also features recently remodeled comfort stations with laundry and shower facilities.

Rate: \$25/night



Exhibitors are expected to maintain hotel premises and their dogs in a quiet, clean and well-kept manner and for cleaning up after their dogs immediately on hotel/motel and show grounds. Motels/hotels require that dogs be crated when unattended; no bathing or grooming of dogs in guest rooms. Exhibitors/handlers are responsible for any damages to motels/hotels or the event site and may result in disciplinary action by the Trial Committee. Entries may be refused in the future for previous misuse of the motel facilities.

Complaints lodged against any exhibitor will be under the auspices of our Trial Committee and reported to the AKC. This is an AKC-supported measure.

PLEASE REMEMBER: Hotels do not have to allow us to keep our dogs in the rooms. We are all responsible for insuring future pet acceptance at our favorite hotels. Please clean up after your dogs (inside and outside), keep them quiet so as not to disturb other guests, and generally be considerate of others. We all want to continue to have nice places to stay when we travel with our dogs.

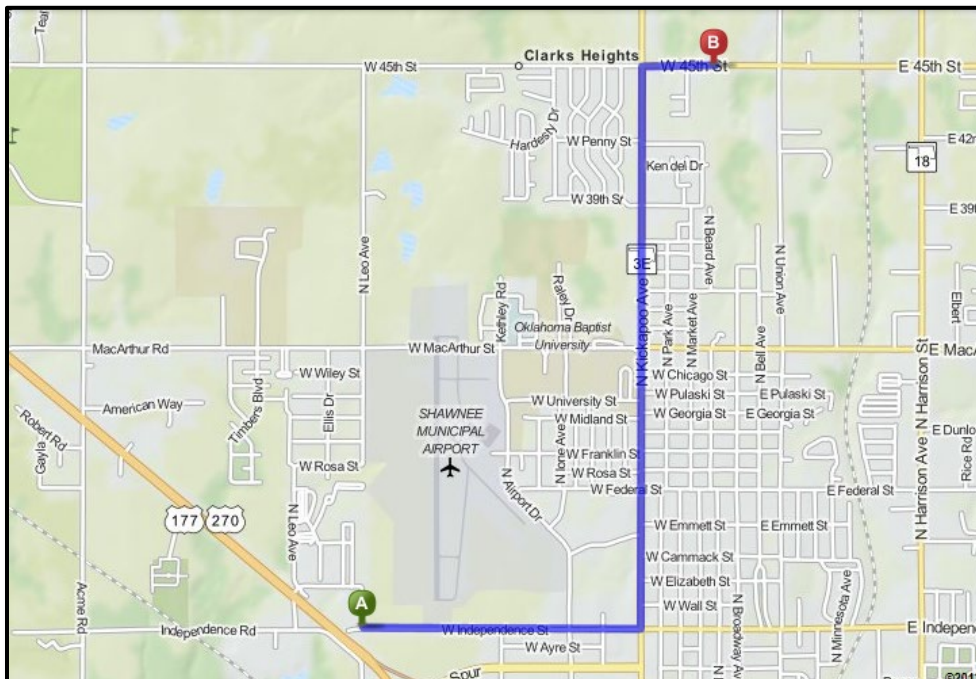
Veterinarians (On Call)

VETERINARY EMERGENCY CONTACT INFO

Northside Veterinary Hospital
121 W. 45th, Shawnee, OK 74804
405-273-3700

FROM SHOW SITE (A) TO VET'S OFFICE (B) - 3.2 MILES – 10 MINUTES

1. Head **east** on **W Independence St** toward **N Pottenger St** .0.5 mi
2. Take the 3rd left onto **N Kickapoo St** .2.0 mi
3. Turn right onto **W 45th St** - Destination will be on the right .0.3 mi



THE TRIAL SITE

1700 W. Independence
Shawnee, OK 74802-1466

Additional directions can be found at <http://www.shawneeexpo.org/map-directions/>

Shawnee is 36 miles east of Oklahoma City.

From Oklahoma City: Go East on I-40 toward FT. SMITH. • Merge onto US-177 S/US-270 E/OK 3W E via exit number 181 toward SHAWNEE. • Follow 177 S for 4.5 miles. The trial site will be on the left.

